









# Dutch Bulbs

FOR  
FALL PLANTING

## AUTUMN



Belle Alliance

White Swan

Chrysolora

Cottage Maid

PRICE \$ 325 POST PAID. SEE PAGE 5.  
BED K TULIPS

# 1905

THE STEELE, BRIGGS & SEED CO. LIMITED.  
BRANCHES AT HAMILTON, ONT. & WINNIPEG, MAN.  
TORONTO.



TORONTO, HAMILTON and WINNIPEG  
HEAD OFFICE: TORONTO, ONT.

CATALOGUE  
OF

Plant now, you cannot obtain them in the Spring

Autumn

For Winter Blooming in the House, or for Spring Flowering in the Garden, these Bulbs must be planted this Autumn

Bulbs, Seeds, Plants, Etc.

**PLEASE READ** If people only knew how easy it is to grow bulbs, hundreds of people would be sorry that they had not grown them some years ago. There is no mystery about growing them; it's quite simple—SEND FOR OUR PAMPHLET (Free) on "How to Grow Bulbs." It tells all about the treatment of them. What is nicer or more attractive than a fine bed of Tulips or Hyacinths coming into flower in your garden in the early spring—just after the long, dreary winter? then again what could be more delightful than a few pots of lovely, fragrant flowers blooming in the house during the winter months, when everything outside is frozen up? You can have a magnificent display at a very small cost, which will well repay your time and expense of growing.

TIME OF SENDING

Not all fall bulbs are ready at the same time, but nearly all of the Dutch and French importations are in store for Sept. 15th. Other plants that make a late Fall growth, like Lillies, Lily of the Valley, Spiraea, Tuberoses and Pæonies, are ready from Oct. 20th. The following table gives approximate dates of arrival:—

**Sept. 1st**—Lilium Candidum, Roman Hyacinths, Lilium Harrisii, Freesia, Paper White Narcissus.

**Sept. 15th**—Hyacinths, Tulips and other Dutch Bulbs, Callas.

**Oct. 20th**—Full supplies of Lillies, Chinese Sacred Lily, Pæony and Gladiolus.

**Nov. 10th**—Spiraea and Lily of the Valley, new crop of Tuberoses.

Unless otherwise stated by our customers we always forward such bulbs as are ready on receipt of order, and the balance as fast as the dirt-rot kinds arrive. If other arrangements are desired, please so state at the bottom of the order.

**BULBS BY MAIL OR EXPRESS**—All Bulbs herein quoted will be sent to any Post office in Canada prepaid, when ordered at printed prices, except where noted.

**ORDERS**—All orders are filled in rotation as received. We would advise early orders to ensure them being filled complete, as later in the season some varieties become exhausted, when we must reserve the privilege of supplying another sort as near the color as possible, but shall always substitute an equal if not better variety than ordered.

**REMITTANCE**—All Orders must be accompanied by the cash for full amount of order, which may be sent by Registered Letter, Express or Post Office Order.

**ADDRESSES**—Please write your Name, Post Office and Province plainly, that there be no disappointment by orders being incorrectly sent.

"Snowdrift" Collection  
of Bulbs

FOR CEMETERY PLANTING

100 Pure White Flowering Bulbs for \$1.00

POST PAID

For planting on graves or cemetery lots this Collection is unsurpassed, as these varieties, once planted, will live for a number of years without any care, and will throw a profusion of bloom every spring.

- 50 Crocus, Large Flowering, pure white.
- 12 Snowdrops, Elwe's Giant.
- 12 Narcissus, Poeticus, very fragrant, with beautiful white flowers.
- 6 Hyacinths. Pure white, single large flowering.
- 12 Tulips, Double. Pure white, very fine.
- 2 Lilium Candidum. The "Madonna" Lily very hardy and exceptionally fragrant. The most beautiful hardy white lily in cultivation.
- 6 White Spanish Iris, very beautiful.

INDEX

NAME	PAGE	NAME	PAGE	NAME	PAGE	NAME	PAGE
Aconite, Winter	14	Chrysanthemum	17	Guernsey Lillies	13	Poultry Supplies	22, 23
Alstromeria	7	Collections	1, 2, 5, 7, 17	House Plants	17, 18, 19, 20	Prepared Plant Soil	19
Alliums	9	Cordylone	19	Hyacinths	1, 2, 3, 10	Ranunculus	13
Amaryllis	8	Crocus	8	Hyacinth Candicans	14	Red Calla	10
Ampelopsis	21	Crown Imperials	14	Hyacinth Glasses	15	Roman Hyacinths	1
Anemones	7	Cuban Lily	16	Iris	12	Roses	20
Anomatheca Cruenta	11	Cyclamen	9	Irlas	12	Rubber Trees	18
Araucaria Excelsa	19	Cyperus	8	Jacobean Lily	8	Scarlet Freesias	11
Arams	9	Dafoedus	16	Jonquils	7	Scillas	15
Asparagus	17	Dialytra or Dicentra	13	Lachenalia	12	Seeds	21, 24, 25
Atamasco Lillies	8	Dog's Tooth Violet	14	Lawn Grass	25	Shrubs	20
Babianas	9	Easter Lily	11	Lencojum Venum	18	Small Fruits	20
Begonias	17	Erythronium Grandiflorum	14	Lillies	11	Smilax	18
Bermuda Easter Lily	11	Fair Lily of the South	12	Lily of the Valley	14	Snowdrops	15
Black Calla	10	Fall Wheat Seed	24	Miniature Hyacinth	1	Snake Lily	12
Bleeding Heart	13	Feathered Hyacinth	1	Mushroom Spawn	22	Sparaxis	12
Bone Cutters	22	Ferns	20	Musk Hyacinth	1	Spiraea	15
Brooms	21	Fern Balls	25	Narcissus	6, 7	Spring Snowflake	13
Boston Ivy	21	Ficus	25	Nerine	13	Sundries	21, 22, 23
Brodias	9	Flower Pots	17	Onion Sets	15	Surprise Collection	16
Bulbocodium Venum	8	Flower Seed	21	Ornithogalum	14	Thermometers	23
Butterfly Lillies	9	Freesias	11	Otaheite Orange	18	Triteleia	7
California Fire Cracker Plant	11	Fritillaria Meleagris	12	Oxalis	15	Tropaeolum	14
Calla Lillies	9, 10	Giant Cape Hyacinth	10	Palms	19	Tuberoses	14
Calochortus	7	Gladiolus	13	Pæony	16	Tulips	5, 6
Camassia	13	Glory of the Snow	9	Pansy Seed	21	Vegetable Seeds	23
Carnation	18	Gloxinia	16	Ponderosa Lemon	19	Wild Rice	23
Chenille Plant	18	Grape Hyacinth	11	Ploex, Perennial	18	Winter Aconite	14
Chinese Sacred Lily	7	Grevillea or Silk Oak	19	Plant Food	25	Wheat	24
Chionodoxa Lucillae	9	Grist Mill	24				













CHOICE  
MIXED  
**Dutch**  
**Hyacinths**

**FIRST QUALITY  
SOUND BULBS  
CERTAIN TO BLOOM**

The following varieties are for outdoor culture in beds, groups, borders, etc., where an effective display alone is the object, or for growing in pots indoors; each color embraces many shades, from the lightest to the darkest. Our bulbs are imported from the most famous Hyacinth farms as heretofore, and we offer them confidently as the very best in the market, and certain to give unqualified satisfaction.

Prices by mail, postpaid, each, 6c.; per doz., 60c.; per 100, \$4. By express at purchaser's expense, each, 5c.; doz., 50c.; 100, \$3.50.

**25 SOLD AT 100 RATES**

1	Single Dark Red, mixed, all shades.	10	Double Blue, mixed, all shades.
2	“ Rose “ “ “	11	“ Yellow “ “
3	“ White “ “	12	“ All Colors, mixed
4	“ Blue “ “		
5	“ Yellow “ “		
6	“ All Colors, mixed.		
7	Double Dark Red, mixed, all shades.		
8	Double Rose, mixed, all shades		
9	“ White “ “		

**FEATHERED  
HYACINTHS**

13 A curious specie, well worthy of culture as a pot plant, though not so beautiful as most others. The color is reddish blue, and of a feathery texture, borne on the end of a long spike of green flower bells. Hardy, and can be grown in the garden or forced. Price, 3 for 10c.; per doz., 25c.; per 100, \$1.25, postpaid.

**SINGLE  
HYACINTHS**

**MUSK HYACINTH**

The True Large Flowering Variety.

14 A small growing Hyacinth of a purplish color, emitting when in flower a strong and very agreeable musky odor. Valued for pot culture, and well worth growing in clumps in the open ground. Price, 10c. each; \$1 per dozen, postpaid.

**MINIATURE HYACINTHS**

15 These are most truly lovely. The spikes of bloom are long and gracefully curved, and of the most beautiful colors and delicious fragrance. Try them for winter blooming and you will be delighted. Mixture of choicest sorts, 5c. each; doz., 40c., postpaid.

**ROMAN HYACINTHS**

The flowers, while smaller than those of the ordinary Dutch Hyacinth, are produced in much greater abundance—their delicious perfume, earliness and profusion of bloom have made Roman Hyacinths exceedingly popular. They are so easily grown and so early that if potted in August and September they can be brought into flower in November and December. (See Cut).

- 16 **Single White**, elegant waxy white bells of great beauty and fragrance. Price, postpaid, 6c. each; 12 for 55c.; per 100, \$3.75.
- 17 **Single Light Blue**, lovely light blue, a fine contrast to the white variety; 6c. each; 12 for 55c.; per 100, \$3.75.
- 18 **Single Light Pink**, fine flowers of a beautiful bluish pink color; 6c. each; 12 for 55c.; per 100, \$3.75.
- 19 **Single Dark Red**, a grand sort, with enormous bright, deep bells and large spikes; 6c. each; 12 for 55c.; per 100, \$3.75.
- 20 **SPECIAL OFFER.**—For only 20c. we will send one bulb of each of these four fine Roman Hyacinths, three of each for 60c.



ROMAN HYACINTHS—RED, WHITE AND BLUE



# Our RAINBOW Collections of Bulbs

It is our aim, in these collections, to select only bulbs that are easy to cultivate, and sure to give satisfaction. For those who have only a limited amount of money to spend for bulbs, or in any way short of room and want a variety, more can be obtained for the money in these collections than in any other way. As we offer them at a large reduction from regular prices, we shall be unable to make any change in them, and customers not finding what they wish in these collections are referred to other pages of the catalogue.



## No. 1 for Outdoor Planting

300 BULBS. PRICE, \$3.50. ½ COLL., \$2.  
¼ COLL., \$1.25, POSTPAID.

- 12 Hyacinths, single, red, white and blue
- 12 Hyacinths, double, red, white and blue
- 28 Tulips, single, all colors.
- 28 Tulips, double, all colors.
- 28 Parrot Tulips, handsome.
- 100 Crocus, all colors.
- 8 Trumpet Narcissus,
- 8 Double Narcissus,
- 12 Poeticus Narcissus,
- 8 Spring Snowflakes.
- 4 Lillium Candidum, very fragrant.
- 28 Snowdrops, single.
- 12 Scilla Siberica.
- 12 Ranunculus, mixed.

} The Flower  
of Love.

## No. 2 for House Culture

140 BULBS FOR \$3. ½ COLL., \$1.75.  
¼ COLL., \$1, POSTPAID.

- 2 White Calla Lillies.
- 12 Hyacinths, splendid, named.
- 12 Hyacinths, Roman, red, white and blue
- 24 Tulips, single, Duc Von Tholh.
- 12 Tulips, double, mixed varieties.
- 12 Narcissus, select, mixed.
- 12 Alliums, choice, assorted.
- 9 Brodiaes, mixed.
- 12 Freesia, Refracta Alba.
- 12 Ixias, mixed.
- 8 Oxalis, "
- 12 Sparaxis, "
- 2 Lillium Harrisii, (Easter Lily)

## No. 3 for House Culture.

COLLECTION OF 25 BULBS FOR 50 CENTS,  
POSTPAID.

- 1 Chinese Sacred Lily.
- 2 Dutch Hyacinths.
- 2 Roman Hyacinths.
- 4 Narcissus, assorted.
- 4 Freesias, "
- 3 Alliums, "
- 5 Tulips, named Varieties, mixed.
- 1 Bermuda Easter Lily.
- 3 Sparaxis, mixed colors.

## Rainbow Collection Hyacinths 12 FOR \$1.50 POSTPAID.

**Specially Selected Top Roots for Growing in Water**  
Hyacinths growing in glasses of water are elegant ornaments for parlor or sitting room, and can be flowered in this way with very little trouble. This assortment is made up of exceptionally beautiful varieties, such as we have found to succeed well when grown in glasses.

### SINGLE VARIETIES.

- 95 Albertine. Pure white, very early and large.
- 96 Garibaldi. Brilliant carmine, with large spike and bells.
- 97 Jacques. Beautiful pink, very large spike.
- 98 Lord Derby. Light porcelain blue.
- 99 Innocence. Pure white, with fine massive spike.
- 100 McMahon. Deep golden yellow, large bells.
- 101 Pasquia. Dark blue, with large spike and truss.

### DOUBLE VARIETIES.

- 102 Admiration. Pure white with violet centre.
- 103 Duke of Norfolk. Very dark blue.
- 104 Empress of India. Bright red, very fine.
- 105 Flevo. Pure white, very fragrant.
- 106 General Kohler. Deep yellow.

Price, 15c. each, or entire set of 12 (Double and Single) for \$1.50, postpaid.

## Exhibition Collection Hyacinths

For Pot Culture. 12 for \$2.00, Postpaid.

An assortment of superb varieties of distinct shades of color, and comprising only sorts producing large spikes of bloom. All are different and all are named. Sure to give the greatest satisfaction for winter flowering, in pot, in the conservatory or window garden.

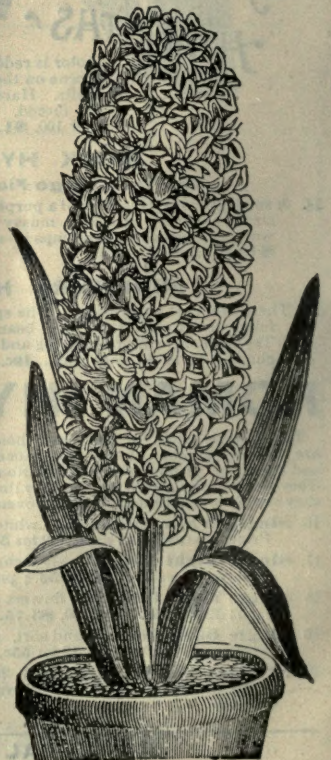
### SINGLE VARIETIES.

- 108 Coquette. The finest pink Hyacinth in cultivation.
- 109 Distinction. Splendid dark purple. New.
- 110 Leviathan. Blush white, large bells and spike.
- 111 Rot des Belges. The best scarlet grown.
- 112 Queen Victoria. Pure white, exceptionally large and fine.
- 113 Tamerlan. Orange yellow. New.
- 114 Unique. Large porcelain blue, large spike.

### DOUBLE VARIETIES.

- 115 Attraction. Clear porcelain blue.
- 116 Isabella. Rosy white, exceedingly large.
- 117 Panorama. Carmine red, with compact spike.
- 118 Prince of Waterloo. Pure white, with large bells.
- 119 Ophir. Bright yellow, with reddish centre.

Price, 20c. each, 6 for \$1.15.  
Or entire set of 12 for \$2.00 (postpaid). For general list see page 3.





CHOICE NAMED

# SINGLE HYACINTHS

Strictly First Size Bulbs and Sure to Bloom.

## SINGLE RED AND PINK

- 22 Amy, crimson, golden truss.
- 23 Cosmos, dark rose, large spike, very handsome.
- 24 Chas. Dickens, salmon pink shaded, carmine, large truss.
- 25 Fabiola, delicate pink carmine, striped, very pretty.
- 26 Gen. Pellister, deep crimson, early.
- 27 Grand Valqueur, pale pink, fine spike.
- 28 Gertrude, deep rose, fine compact spike.
- 29 Moreno, pink, large bells and spike, early.
- 30 Norma, pale pink, splendid gigantic bells, early.
- 31 Robert Steiger, deep crimson red flowers, large truss.

Above varieties, each, 10c., \$1 per dozen; by mail, postpaid, each, 11c., per dozen, \$1.10.

## SINGLE PURE WHITE AND BLUSH WHITE

- 32 Alba Superbissima, fine truss, early pure white.
- 33 Baroness Von Thuyl, large truss pure white.
- 34 Grand Vedette, large bells, superb snow white.
- 35 Grandeur a Mervelle, bluish white, beautiful.
- 36 La Grandesse, a gem, very large truss, purest white.
- 37 Madame van der Hoop, splendid, purest snowy white.
- 38 Mont Blanc, purest white, large handsome spike.
- 39 Mina, very large truss.
- 40 Mammoth, creamy white, extra large bells.

Above varieties, each, 11c., per dozen, \$1.10; by mail, postpaid, each, 12c., per dozen, \$1.20.

## SINGLE MAUVE AND VIOLET

- 41 Haydn, a distinct mauve, splendid spike.
- 42 L'Esperance, violet blue.
- 43 L'Unique, purplish mauve, very early.
- 44 Sir W. Mansfield, violet, with large spike.

Above varieties, each, 12c., dozen, \$1.20; by mail, postpaid, each, 13c., dozen, \$1.30.

## SINGLE DARK AND PORCELAIN BLUE

- 45 Baron von Thuyl, light blue, fine truss.
- 46 Charles Dickens, tinged lilac shade, large truss.
- 47 Grand Maitre, porcelain blue, very beautiful.
- 48 King of the Blues, dark blue, extra large spike.
- 49 La Peyrouse, porcelain blue, extra fine.
- 50 Mary, fine large spike, dark.
- 51 Regulus, large bells, good truss, porcelain blue.

Above varieties, each, 11c., per doz., \$1.10; by mail, postpaid, each, 12c., dozen, \$1.20.

## SINGLE YELLOW

- 52 Citroniere, citron yellow, very fine.
- 53 Fleur d'Or, pale yellow, one of the best.
- 54 Hermann, orange, extra fine.
- 55 Ida, finest pure yellow.
- 56 King of Holland, orange yellow, very fine.
- 57 Optimist, pure yellow, a large truss.

Above varieties, each, 12c., dozen, \$1.20; by mail, postpaid, each, 13c., dozen, \$1.30.



MORENO

## Double Hyacinths

### DOUBLE RED AND ROSE

- 58 Alida Catharina, red, early, large drooping bells.
- 59 Bonquet Tendre, carmine rose, perfect bloom.
- 60 Bouquet Royal, dark centre, rosy salmon.
- 61 Grootvorst, rosy salmon, dark centre, large truss.
- 62 Koh-i-noor, pink, exceptionally fine.
- 63 Princess Royal, light red, one of the largest.
- 64 Regina Victoria, dark rosy red, large truss.

Above varieties, each, 10c., per dozen, \$1.00; by mail, postpaid each, 11c., per dozen, \$1.10.

### DOUBLE PURE WHITE AND BLUSH WHITE

- 65 Anna Maria, bluish white with violet centre.
- 66 Blanchard, fine bells, clear white.
- 67 Grootvorstia, creamy white, large bells, fine spike.
- 68 La Tour d'Auvergne, pure white, large truss, very early
- 69 La Virginité, bluish, with a large, broad truss.
- 70 Violet Superb, rosy white, violet centre.

Above varieties, each, 11c., dozen, \$1.10; by mail, postpaid, each, 12c., per dozen, \$1.20.

### DOUBLE DARK AND LIGHT BLUE

- 71 Bloksburg, light porcelain shade, fine truss.
- 72 Crown Prince of Sweden, extra fine truss, violet tinge.
- 73 Garrick, lilac blue, splendid.
- 74 Lord Raglan, fine bells, superior.
- 75 Mignon de Drijfhaut, good truss, lilac purple.
- 76 Prince of Saxe Welmer, large truss, tall loose spike.

Above varieties, each, 11c., dozen, \$1.10; by mail, postpaid, each, 12c., per dozen, \$1.20.

### DOUBLE YELLOW

- 77 Bonquet d'Orange, pinkish yellow.
- 78 Gæthe, light shade of yellow, splendid.
- 79 Jaune Supreme, deep yellow, fine spike.
- 80 La Grandeur, very bright, yellow (extra).
- 81 William III., rich shade, dark yellow.

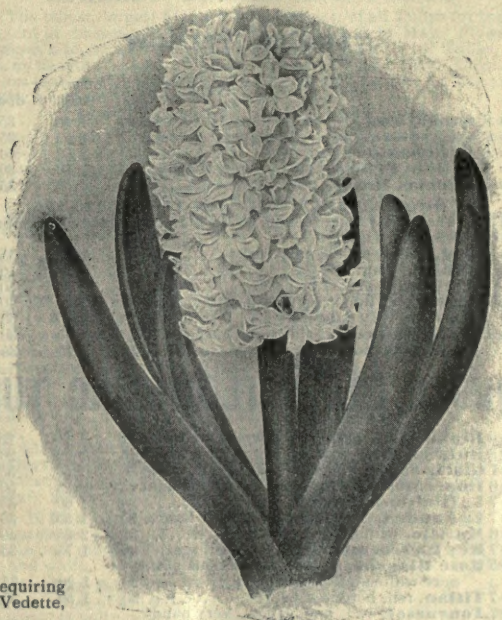
Above varieties, each, 12c., dozen, \$1.20; by mail, postpaid, each, 13c., per dozen, \$1.30.

### COLLECTIONS OF HYACINTHS FOR BEDS.

We offer these sets at prices much below the regular rates, to encourage a great number to put out beds of bulbs in the autumn knowing they will give unbounded satisfaction.

**BED A—Named Hyacinths**—15 feet in circumference, or 5 feet across, requiring 94 bulbs, planted 6 inches apart. No. 1—6 Robert Steiger, red. No. 2—30 Grand Vedette, white. No. 3—18 Baron von Thuyl, blue. No. 4—40 Norma, rose. Price, \$6.

**BED B—Named Hyacinths**—Bed 6 feet long by 3 feet across, requiring 75 bulbs, planted 6 in. apart. No. 1—21 Robert Steiger, red. No. 2—24 Grand Vedette, white. No. 3—30 Baron von Thuyl, blue. Price, \$4.50.



MOUNT BLANC.



# SINGLE EARLY TULIPS

Tulips are universal favorites, and their ease of culture, combined with beauty of form and gorgeous coloring, renders them the most popular bulbs grown for spring bedding, and for winter flowering in the greenhouse and window garden they are incomparable.

- 120 **Single Early Rainbow Mixture.** This mixture is unrivalled, and we unhesitatingly recommend it as excelling in the fine quality of the bulbs and in the magnificent brilliancy and endless variety of the colors. Per dozen, 30c.; per 100, \$1.50; by mail, postpaid, dozen, 35c.; 100, \$1.75.
- 121 **Single, Extra Fine Mixture.** Per dozen, 25c.; per 100, \$1.35; by mail, postpaid, dozen, 30c.; 100, \$1.65.
- 122 **Single, Good Mixed.** Per dozen, 12c.; per 100, 80c.; postpaid, dozen, 18c.; 100, \$1.00.
- 123 **Double Rainbow Mixture.** Per dozen, 35c.; per 100, \$2.00; postpaid, dozen, 40c.; 100, \$2.25.
- 124 **Double, Extra Fine Mixture.** Per dozen, 25c.; per 100, \$1.30; postpaid, dozen, 30c.; 100, \$1.60.

The letters a, b, c, preceding the varieties, indicate their earliness of bloom; in the a's flower together and are the earliest, b next, etc. The average height in inches is also given to aid in arranging flower beds.



## SINGLE RED AND ROSE

	By express at purchaser's expense.		By mail, postpaid.	
	doz.	100	doz.	100
125 b 8 <b>Coeur Ponceau</b> , rosy red and white....	20c.	\$1 20	25c.	\$1 50
126 b 8 <b>Rosamundi</b> , rose and white.....	20	1 20	25	1 50
127 b 7 <b>Joost Von Vendell</b> , deep red, feathered white.....	25	1 35	30	1 65
128 c 8 <b>Rachel Ruisch</b> , fine rose.....	20	1 10	25	1 25

## SINGLE SCARLET AND CRIMSON

129 a 7 <b>Artus</b> , bright scarlet, very h'dsome	25	1 35	30	1 65
130 b 7 <b>Belle Alliance</b> , brilliant scarlet, extra.....	35	2 00	40	2 25
131 b 7 <b>Crimson King</b> , bright crimson.....	25	1 35	30	1 65
132 a 9 <b>Cardinal's Hat</b> , dark red, bordered brown.....	15	1 00	20	1 25
133 a 8 <b>Pottebakker</b> , scarlet, extra.....	35	2 00	40	2 25
134 b 6 <b>Vermilion</b> , dazzling scarlet.....	45	2 75	50	3 00
135 a 8 <b>Proserpine</b> , rich carmine rose red	45	2 75	50	3 00
136 b 7 <b>President Lincoln</b> , large flower of glowing purplish carmine, very effective, bedded with yellow.....	30	1 75	35	2 00
137 b 7 <b>Wouwerman</b> , purplish violet, very large flower.....	30	1 75	35	2 50

## SINGLE WHITE

138 a 7 <b>Jacht Van Delft</b> , pure white.....	20	1 25	25	1 50
139 b 7 <b>L'Immaculee</b> , pure white.....	20	1 25	25	1 55
140 a 7 <b>Alba Regalis</b> , creamy white.....	30	1 50	35	1 75
141 a 8 <b>Pottebakker</b> , white, fine.....	30	1 75	35	2 00
142 b 8 <b>La Reine</b> , shaded rose.....	40	1 20	25	1 50
143 b 7 <b>White Swan</b> , snow white.....	30	1 75	35	2 00

## SINGLE STRIPED AND BORDERED

144 b 6 <b>Bizard Verdlet</b> , carmine, gold striped.....	25	1 30	30	1 60
145 b 6 <b>Cottage Maid</b> , rosy pink, shaded white.....	25	1 25	30	1 60
146 b 9 <b>Duchess de Parma</b> , orange red, bordered yellow.....	20	1 20	25	1 50
147 b 9 <b>Kaiser's Kroon</b> , crimson scarlet, bordered yellow, large and effective	30	1 75	35	2 00
148 b 7 <b>Eleonora</b> , violet, bordered white	30	1 50	35	1 75

## SINGLE YELLOW

	By express at purchaser's expense.		By mail postpaid	
	doz.	100	doz.	100
149 a 8 <b>Canarybird</b> , golden yellow, very fine	30	1 50	35	1 75
150 b 7 <b>Chrysolora</b> , pure yellow, large flowers	30	1 50	35	1 75
151 a 8 <b>Pottebakker</b> , yellow.....	35	2 00	40	2 25
152 b 7 <b>Yellow Prince</b> , bright, large & showy	25	1 30	30	1 60
153 a 8 <b>Thomas Moore</b> , orange yellow.....	30	1 50	35	1 75

## SINGLE EARLY DUC VAN THOLL TULIPS

These are the earliest to bloom of all Tulips, and are greatly prized for pot culture during winter.

154 a 6 <b>Red</b> , yellow edged, very early.....	30	1 50	35	1 75
155 a 6 <b>White</b> , beautiful.....	35	2 25	40	2 50
156 a 6 <b>Yellow</b> , clear and brilliant.....	45	2 75	50	3 00
157 a 6 <b>Rose</b> , very fine.....	35	2 25	40	2 50
158 a 7 <b>Scarlet</b> , very dazzling.....	30	1 60	35	1 85
159 a 6 <b>Gold Striped</b> , scarlet striped, gold.....	25	1 35	30	1 60
160 <b>Single, mixed</b> .....	30	1 75	35	2 00

## DOUBLE EARLY FLOWERING TULIPS

161 b 6 <b>Blanc borde</b> purple, purple and white	20	1 20	25	1 50
162 b 8 <b>Duke of York</b> , rose, bordered with white	15	1 00	20	1 25
163 a 7 <b>Gloria Solis</b> , reddish brown, yellow edges	30	1 50	35	1 75
164 a 6 <b>Imperator Rubrorum</b> , scarlet, brilliant	45	2 75	50	3 00
165 b 7 <b>Le Blaison</b> , light rose.....	30	1 60	35	1 85
166 b 7 <b>La Candeur</b> , white, very fine and large..	30	1 50	35	1 75
167 b 6 <b>Murillo</b> , white, good.....	35	2 25	40	2 50
168 b 7 <b>Rex Rubrorum</b> , bright crimson, scarlet	30	1 75	35	2 00
169 b 5 <b>Rose Blanche</b> , flower of enormous size, pure white and very double.....	20	1 20	25	1 50
170 a 7 <b>Titian</b> , red, bordered yellow.....	30	1 50	35	1 75
171 a 7 <b>Tournesol</b> , red and yellow, very handsome, one of the best for forcing.....	30	1 75	35	2 00
172 a 7 <b>Tournesol</b> , yellow, orange shaded, fine.....	45	2 50	50	2 75
173 a 6 <b>Yellow Rose</b> , pure yellow.....	25	1 25	25	1 55
174 b 6 <b>Duc de Bordeaux</b> , orange, red and yellow.....	40	2 50	45	2 75

**Cultural Directions with every order.**



LA CANDEUR REX RUBRORUM AND MURILLO





No. 1—Bizarre.  
 “ 2—Bybloemen.  
 “ 3—Parrot.

# LATE, OR MAY FLOWERING - SINGLE GARDEN TULIPS

This group differs from the Early Single Tulips by their taller growth and later bloom. Planted in conjunction with the Early Tulips — on page 4—a gorgeous display of bloom can be enjoyed until late in May. They are brilliant in the extreme for bedding purposes. Their flowers are very large, symmetrically formed, and their magnificent colors, with interesting and delicate featherings and markings, make a sight not soon to be forgotten, particularly when bedding out in quantity. They are very hardy and do well through all sorts of weather.

## PARROT OR DRAGON TULIPS

These belong to the late or May-flowering Tulips, and have immense attractive flowers of singular and picturesque forms and brilliant and varied colors. The petals are curiously fringed or cut, and the form of the flower, especially before it opens, resembles the neck of a parrot.

- 178 **Admiral de Constantino.** Large red flowers, tipped with orange. Price, per doz., 20c.; per 100, \$1.20; by mail, postpaid, doz., 25c.; per 100, \$1.50.
- 179 **Lutea Major.** Large bright yellow, very fine. Price, per doz., 20c.; per 100, \$1.20; by mail, postpaid, doz., 25c.; per 100, \$1.50.
- 180 **Margraff von Baden.** Yellow, striped with scarlet and green. Price, per doz., 20c.; per 100, \$1.20; by mail, postpaid, doz., 25c.; per 100, \$1.50.
- 181 **Cramoie Brilliant.** (Giant Flowering Parrot Tulip). A splendid improvement, with large black, star-shaped centre, well suited for pot culture. Per doz., 30c.; per 100, \$1.75; by mail, postpaid, 35c. doz.; \$2.00 per 100.
- 182 **Perfecta.** Yellow and red. 3 for 10c.; doz., 35c.; 100, \$1.20; by mail, postpaid, 25c. doz.; \$1.50 per 100.
- 183 **Parrots.** Finest mixed colors, 15c. per doz.; \$1 per 100; postpaid, doz. 20c.; 100, \$1.25.

## NEW DARWIN TULIPS

- 184 The flowers are very large, of symmetrical form, and are borne on tall strong stems, often 2 feet high. They by far surpass in colors and brilliancy anything before known in Tulips. The colors are so glowing and bright that in the sunlight the effect is fairly dazzling. They include almost every conceivable color and shade, from the faintest blue to the darkest violet, from soft rose to the most brilliant red, and from light brown to what is believed to be the darkest black in the floral world. Price, per doz., 30c.; 100, \$1.75; postpaid, 35c. doz.; \$2.00 per 100.

## PICOTEE EDGED TULIP

- 185 **Maiden's Blush.** Flowers of medium size, white pencilled and margined with bright cerise. Per doz., 40c.; 100, \$2.50; by mail, postpaid, 45c. doz.; 100, \$2.75.

## BIZARRE AND BYBLOEMEN TULIPS

- 186 **Bizarres.** Grand rich flowers of perfect shape, having a yellow ground feathered or striped with crimson, purple or white. Choicest mixed varieties, 20c. per doz.; \$1 per 100; postpaid, 25c. doz., \$1.50 per 100.
- 187 **Rose Bybloemens.** Magnificent flowers of perfect form, having a white ground with beautiful stripes and markings of crimson, pink and scarlet or rose. Mixed varieties, 20c. per doz.; \$1.25 per 100. Postpaid, 25c. per doz.; 100 for \$1.55.
- 188 **Violet Bybloemens.** Blotched, striped or feathered with blue, lilac, violet, purple or black on white ground; 20c. per doz.; \$1.25 per 100. Postpaid, 25c. doz.; 100, \$1.55.

## SCARLET GESNERIANA TULIPS

- 189 The tallest, largest flowered, and showiest of all Tulips for bedding out in masses. Height, two feet, flowering in May. Flowers of enormous size, on strong stems; the most durable of all Tulips, as it holds its beautiful color and keeps perfect several weeks. Color, rich crimson scarlet with glittering blue black centre; 20c. per doz.; \$1.20 per 100; postpaid, 25c. per doz.; \$1.55 per 100.

## BOUTON D'OR "IDA" TULIPS

- 190 Much similar to the scarlet Gesneriana variety in shape of flower, but is of a pure golden yellow color, exceptionally fine, 3 for 10c.; doz., 30c.; per 100, \$1.50; postpaid, 35c. doz.; \$1.75 per 100.

## OCULIS SOLIS TULIP

- 192 **Sun's Eye Tulip.** A very novel, beautiful and showy variety, dazzling fiery red with black eye. Very handsome. Ea., 6c.; doz. 50c.

# COLLECTION OF TULIPS FOR BEDS

We offer these Sets at prices much below the Regular Rates to encourage a greater number to put out beds of Bulbs this Autumn, knowing they will give unbounded satisfaction.

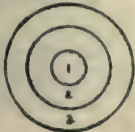
For beauty of form and brilliancy of color nothing can equal the gorgeous effects of Tulips. They are perfectly hardy and of the easiest possible culture. The following "Assortment of Tulips for Beds," we have made for the special convenience of those who do not understand the selection of sorts that bloom simultaneously, and are of equal heights. We have selected bright contrasting colors, and the beds will be very effective.

**Cultural Directions.** Plant in Fall after Oct. 1st, until the ground is frozen. Tulips will bloom in partially shaded situations, but a sunny position should be chosen where possible, and the bed should be well drained, or raised, so water cannot stand on the bulbs during winter. A little clean sand placed under and around bulbs permits water to drain away in moist soils. Place bulbs 4 inches apart.

**Collection for Bed K. Single Tulips, Solid Colors.** Contains 200 Tulips in named kinds, will fill a bed like the above, 15 feet in circumference (5 feet across), planted 4 inches apart, viz.: See Illustration front Cover of Catalogue.

50 Belle Alliance, scarlet. 50 Chrysolora, yellow. 50 Cottage Maid, rose. 50 White Swan, white. Price, \$2.75; postpaid, \$3.25.

See Illustration Front Cover.



**Collection for Bed L. Named Tulips.** Size of bed 18 feet in circumference (6 ft. across) requiring 280 bulbs, planted four inches apart, viz., No. 1—40 La Reine, white. No. 2—100 Chrysolora, yellow. No. 3—140 Crimson King, scarlet. Price \$3.25; postpaid, \$3.75.

**Collection for Bed M. Double Named Tulips.** Size of bed 15 ft. in circumference (5 ft. across), requiring 200 bulbs, planted 4 inches apart, viz., No. 1—20 Rex Rubrorum, scarlet. No. 2—60 La Candeur, white. No. 3—60 Gloria Solis, crimson and yellow. No. 4—60 Duke of York, rose and white. Price \$2.60; postpaid, \$3.

**Collection for Bed N. Double Named Tulips.** Size of bed 5 ft. long by 4 ft. across, requiring 144 bulbs, planted 4 inches apart, viz., No. 1—72 La Candeur, double white. No. 2—72 Rex Rubrorum, double scarlet. Price, \$2.25; postpaid, \$2.60.



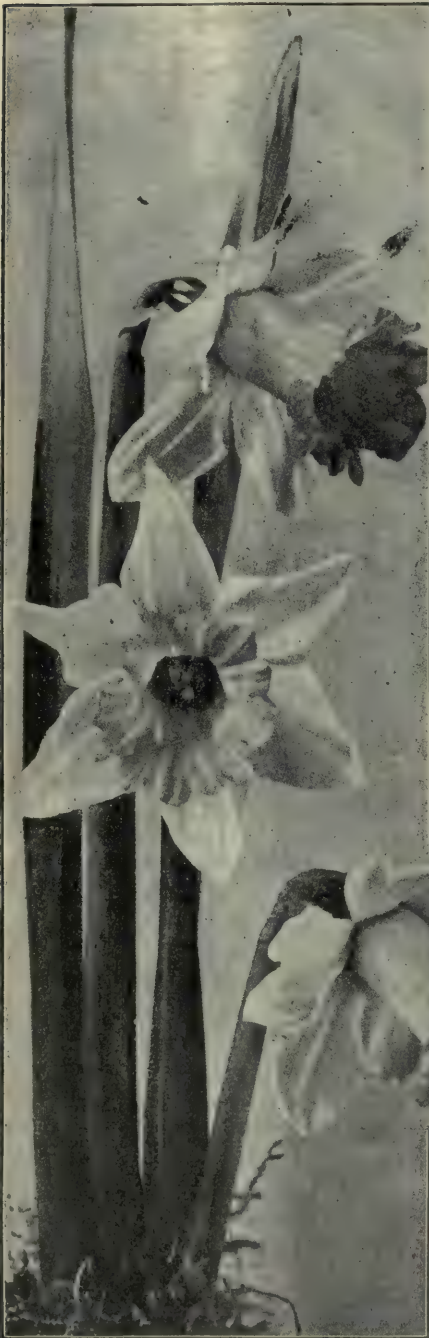
BED M.



BED N.



# Narcissus or Daffodils



A beautiful genus of spring blooming flowers, becoming more popular every year. There are a large number of varieties, and some of the latest introductions are of exceptional merit. The varieties listed in this catalogue are among the most desirable. They are perfectly hardy, thriving in almost any soil and situation, and need not be disturbed oftener than once in 3 or 4 years, and not then unless they have become too much crowded with offsets. Plant in the fall in good garden soil about 3 or 4 inches deep and 4 to 6 inches apart, or plant in pots in the house with 3 or 4 bulbs in a 5-inch pot, giving about the same treatment as for Hyacinths. The cut flowers of Daffodils are much in demand for bouquets and vases, and some of the varieties are forced in immense quantities by florists for cut flowers in winter.

**193 Ard-Righ, or Irish King.** This is the earliest and most vigorous "Giant Trumpet Daffodil" in cultivation. Fine bold flowers of immense size. Color, both of perianth and trumpet, full rich yellow. It is an easy sort for pot culture and forcing. Each 6c.; doz. 60c. postpaid.

**194 Bicolor Victoria.** (New). A variety recently introduced and of exceptional merit. It bears usually two or three large flowers with a creamy white perianth and clear yellow trumpet. (See illustration on back cover of catalogue). Price, each 10c., per doz. \$1.00, postpaid.

**195 Biflorus.** "Primrose Peerless Daffodil," pure white with yellow cup, bearing two flowers on each stem. 3 for 10c.; per doz., 30c. postpaid.

**196 Bulbocodium.** The "large Yellow Hoop Petticoat" is a gem for pot culture and edgings, and bears from six to twelve flowers to each bulb. Each, 5c., doz., 50c. postpaid.

**197 Emperor.** One of the finest Daffodils in cultivation, entire flower of the richest yellow, trumpet of immense size, and the petals of the perianth are so broad they overlap and measure  $3\frac{1}{2}$  in. across. Grand for cutting. Each, 6c.; 60c. doz.; postpaid.

**198 Empress.** A magnificent, large variety, bold and erect. A rare beauty. The best of the two colored trumpets. Perianth white and of great substance, trumpet rich yellow. Each, 7c.; per doz. 70c., postpaid.

**199 Golden Spur.** One of the grandest Daffodils, with extra large, bold, rich yellow flowers, foliage broad and striking. It is of unusual robust habit and unsurpassed for gardens, pots or forcing. Early and free flowering. Each, 5c.; 50c. per doz. postpaid.

**200 Horsefield.** The "Queen of the Daffodils." Very large flowers of pure white, with rich yellow trumpet. The flowers are the largest of this class, very early and free blooming, a grand cut flower. Each, 6c.; per doz., 60c. postpaid.

**201 Leedsil.** (Type). Pure white, star-like flowers. Cup at first slightly tinted, but changes to white. A very pretty variety, exceedingly sweet scented, free bloomer and fine for forcing as well as for open ground planting. 3 for 10c.; 35c. per doz.; \$1.50 per 100, postpaid.

**202 Maximus or Hale's Beaten Gold.** One of the largest and most beautiful of this class. Very large flower of rich, deep, golden yellow. Remarkable for an elegantly twisted perianth. Trumpet deep golden, large, well flanged and deeply fluted. The darkest and richest yellow of all Daffodils. 7c. each; 70c. per doz., postpaid.

**203 Princeps.** Large yellow trumpet, with sulphury white perianth, a very fine free flowering, bold, and effective variety for forcing or cutting. 3 for 10c.; doz. 30c.; 100, postpaid, \$2.00.

**204 Psendo.** "The Garland or Lent Lily," rich yellow trumpet, whitish perianth. 3 for 10c.; per doz. 30c.

**205 Pallidus Præcox.** The "White Pyrenees Daffodil." One of the earliest and most beautiful varieties. Trumpet and perianth are clear sulphur white. Awarded a first-class certificate by London Royal Horticultural Society. One of the best forcing. Each, 5c.; doz. 50c. postpaid.

**206 Poeticus.** The "Pheasant's Eye," or "Poet's Narcissus." Pure white flowers with orange cup, edged with crimson, splendid for cut flowers. Doz. 15c.; per 100, postpaid, \$1.00.

**207 Poeticus Ornatus.** The improved Poeticus. Large, beautifully formed, pure white flowers with saffron cup tinged with rosy scarlet; a magnificent cut flower, very early. 4 for 10c.; doz., 20c.; 100, postpaid, \$1.30.

**208 Str Watkin.** "The Giant Chalice Flower," or "Big Welshman." Immense flowers, sometimes measuring  $5\frac{1}{2}$  inches across, being the largest variety grown. Color, rich sulphur, with a yellow trumpet tinged with orange. Each, 6c., 60c. per doz. postpaid.

**209 Trumpet Major.** Flowers large and almost uniform deep golden. Highly prized as an early forcing sort. 3 for 10c.; doz. 30c.; 100, postpaid, \$2.

## Double Narcissus or Daffodils

**210 Von Ston.** (Talemonius Plenus). The famous "old English Daffodown-dilly," rich golden yellow flower and trumpet, one of the best forcing sorts, immense quantities being grown for this purpose both in Europe and America. Each, 5c.; doz. 40c.; 100, \$2; postpaid, \$2.40.

**211 Alba Plena Odorata.** The "Double White Poet's Narcissus." Snow white, exquisitely scented. Fine for forcing. 3 for 10c.; doz. 25c.; per 100, \$1.40, postpaid.

**212 Incomparable.** "Butter and Eggs." Full double flowers of rich yellow with orange nectary. Splendid forcing variety; 3 for 10c.; doz., 30c.; 100, postpaid, \$2.00

**213 Orange Phenix.** "Eggs and Bacon." Beautiful double white flowers, orange nectary. Splendid for pot and cutting. Each, 5c.; doz., 45c.

## JONQUILS

These are charming members of the Narcissus family, producing clusters of golden yellow blossoms of unsurpassed fragrance. Either for the house or garden culture they are indispensable.

**214 Single, Sweet Scented.** Rich yellow, perianth deeply lobed, 3 for 8c.; per doz., 20c.; per 100, \$1.25, postpaid.

**215 Large Double.** Flowers full, double and of golden yellow color. Each, 5c.; per doz., 50c.

**216 Campernelle.** The best of the Jonquil section; perianth 6 lobed, spreading, and of a light yellow color. 3 for 8c.; per doz., 20c.; per 100, \$1.00.

**217 Rugulosus.** (The Giant Jonquil). Broadly imbricated perianth with large wrinkled cup. Full yellow, 3 for 10c.; 25c. per doz.; \$1.50 per 100.

**218 Mixed Jonquils** from above named sorts. 30c. per dozen; \$2 per 100.



# Polyanthus Narcissus

## OR BUNCHFLOWERED DAFFODILS

Add 15c. per doz. for postage if wanted by mail.

- 226 **Large Flowering Early Paper White.** Pure snow white flowers, borne in clusters, and is perhaps more largely forced for cut flowers than any other, tons of them being used for the flower markets of the world. Very fragrant, and sure to bloom. Can be grown in a similar manner to the Chinese Sacred Lily with splendid results. Each, 5c.; dozen, 50c.; per 100, \$2.50, postpaid.
- 227 **True White Pearl (Louis le Grand).** Large clusters of pure satiny-white flowers. Exquisite. Each, 6c.; dozen, 60c.
- 228 **Grand Primo.** Cup citron, perianth pure white; excellent for cutting. Each, 6c.; dozen, 60c.
- 229 **Grootvorst.** Immense trusses of pure white with yellow cups, very early, the most fragrant. Each, 6c.; dozen, 60c.
- 230 **Grand Soliel d'Or.** Rich yellow, with reddish orange cup—a favorite bedding and cutting variety. Each, 6c.; dozen, 60c.
- 231 **Grand Monarque.** Broad white flowers of large size, with lemon yellow cup; this variety can be successfully grown in water, like the "Chinese Sacred Lily." Each, 6c.; dozen, 60c.



POLYANTHUS NARCISSUS

1 Grand Soliel d'Or. 2 Grand Primo. 3 Grand Monarque.  
One each, 15c., postpaid.

## Chinese Sacred Lily or Oriental Narcissus

Direct from China.

- 233 This is the **Narcissus Orientalls**, and the variety grown by Chinamen for decorating their temples or Joss-houses on their New Year's Day, which occurs in February. For the most part they are grown in water in fancy bowls with just enough pebbles around them to keep them from toppling over. They can also be grown in pots in soil, sand or moss. If planted before November 1st, they will flower by Christmas. The white and yellow flowers are borne in clusters and are highly scented. 10c. each; per dozen, \$1.10, postpaid; 75c. dozen by express at purchaser's expense.



CHINESE SACRED LILY

## TRITELEIA

- Triteleia Uniflora (Spring Star Flower.)** A perfect little gem for pot culture or for borders. It flowers in very early spring months; the bulbs are small, and several should be grown in a pot; it grows about 6 to 8 inches high. Each bulb produces several pretty star-shaped flowers, 1 to 2 inches across, of a delicate milky white suffused with blue, and emits the perfume of primroses; perfectly hardy, and when grown in quantities are effective. 3c. each; 20c. per doz.; \$1.50 per 100.

## ANEMONES

Highly ornamental spring and summer flowering plants, having both single and double flowers, the colors of which are wonderfully beautiful, running through all shades of blue, scarlet, rose, white, lavender, etc. When grown in masses they are brilliant in the extreme. If the flowers are wanted in succession from spring to fall, the roots should be planted in pots or cold frames in the fall for spring blooming, and another lot in the same way towards spring for summer, and another lot in the open ground in May for Autumn flowering. The latter planting should be in a partially shaded situation, where the ground is moist. Anemones are also splendid for pot culture, for flowering in the house or conservatory during winter.

- 233 **Choice Double Anemones.** Mixed colors, 3 for 10c.; per dozen, 30c.
- 234 **Choice Single.** Mixed. 4 for 10c.; 20c. per dozen.

## ALSTROMERIA

- 235 **Alstromeria, Peruvian Lilies.** (Ready in November.) Tuberos rooted plants with beautiful, large, lily-like flowers of great beauty, borne in clusters during the summer; they are splendid for cutting, being of much substance and lasting in perfection a long time. Colors, orange, yellow, scarlet, pink, white and black, beautifully blended, many sorts being striped or blotched. Free bloomers. Plant the tuberous roots one foot deep. Splendid subjects for either pot culture or for planting out in frames. Mixed varieties, 10c. each; \$1 per dozen.

## CALOCHORTUS

OR BUTTERFLY LILIES

- 236 These bulbs are little known or cultivated, as they are not hardy enough to stand our winters in the open ground without protection, but for blooming in pots they are unsurpassed. The flowers are very large, borne on long stems, and are of the most charming butterfly colors, white, yellow, buff, crimson, purple, spotted, and shaded in a charming manner. For winter bloom they require only to be potted (4 or 5 in a 5-inch pot) and treated like Hyacinths or Crocus. When in bloom they will be a marvel of beauty and last for a long time. Price, mixed colors, 3 for 10c.; per dozen, 30c.



ANEMONES



# AMARYLLIS, or KNIGHT STAR LILY

An interesting class of plants, desirable for growing in pots, producing showy, lily-shaped flowers, which are very attractive and handsome. The bulbs should be potted in light, sandy loam, with good drainage. They are of vigorous growth and will repay the care required, being almost sure to bloom the first season. They require abundant moisture when growing, but at the season of rest water should be given sparingly. Our stock is very fine.

- 237 **Amaryllis, Crinum Kirkit, or Gloriosa Lily.** Usually two flower-stalks of dark, purplish color are sent up at the same time, each bearing a large umbel composed of a dozen or more of enormous lily-like flowers of the greatest beauty and fragrance. The petals are broad and pure white, with a deep reddish purple stripe through the centre. Large bulbs, each, 50c.; medium, 30c.
- 238 —**Johnsonii** (Spice Scented) This magnificent bulbous plant throws up an 18-inch spike, bearing from 2 to 6 flowers, averaging from 4 to 6 inches across, of a bright, rich red color, with a white stripe down each petal; it also has a rich, spicy fragrance. It is robust, luxuriant and the earliest Amaryllis; prolific bloomer; easy culture. Extra large, each, 50c.; large, 30c.
- 239 —**Treaten** (Fair Lily of the South). A native of Florida. The flowers are pure white, sweet scented; bulbs quite small; 4 to 5 can be grown in a 5 or 6-inch pot. Per doz., 50c.; each, 5c.
- 240 —**Formosissima** (Jacobean Lily). Intense crimson flowers of a most charming and graceful appearance. The bulbs are dormant during winter and can be kept like Dahlias. Doz., \$1, each, 10c.
- 241 —**Vallotta Purpurea.** A beautiful pot plant, requiring similar treatment to the Gladiolus. It sends up a flower stem about 18 inches in height, bearing from 4 to 8 handsome scarlet flowers. Each, 25c.



AMARYLLIS JOHNSONII

## Atamasco Lilies (ZEPHYRANTHES)

242 These beautiful zephyr flowers or "Fairy Lilies," are gems of rare beauty. Planted in pots or in the open ground, they produce very beautiful lily-like flowers all summer, and will be greatly admired by all who see them. They are easily grown and succeed everywhere. Bulbs, mixed colors, per doz., 50c.; each, 5c.

## Alstromeria

243 **Alstromeria, or Peruvian Lilies.** (Ready in November). Tuberos rooted plants with beautiful, large, lily-like flowers of great beauty, borne in clusters during the summer; they are splendid for cutting, being of much substance and lasting in perfection a long time. Colors; orange, yellow, scarlet, pink, white and black, beautifully blended, many sorts being striped or blotched. Free bloomers. Plant the tuberous roots one foot deep. Splendid subjects for either pot culture or for planting out. Mixed varieties, 10c. each; \$1 per doz.

# Large Flowering Crocus Named Varieties

The Crocus is one of the first flowers of spring, and one of the best for blooming in the house during winter. Half a dozen bulbs may be planted in a pot, and will make a very pretty show. For garden culture plant bulbs two inches deep and two or three inches apart. They are so cheap and pretty they ought to be found in every garden in great abundance. They bloom splendidly when planted on the lawn among the grass. They lift their bright heads up through the sod very early, and give the lawn a charming aspect.

	doz.	100
244 <b>Albion</b> , large striped white and blue .....	\$0 15	\$0 90
245 <b>Caroline Chisholm</b> , fine white extra .....	10	75
246 <b>Cloth of Gold</b> , golden, striped brown .....	10	60
247 <b>Cloth of Silver</b> , white, striped lilac .....	10	75
248 <b>No Plus Ultra</b> , blue, white top, very distinct .....	15	90
249 <b>David Rizzio</b> , dark purple, large .....	15	90
250 <b>Madame Mina</b> , beautiful light feathered, violet and white, a profuse bloomer .....	12	80
251 <b>Baron Brunow</b> , large brilliant purple .....	10	75
252 <b>Queen Victoria</b> , pure white, very fine .....	12	90
253 <b>Sir Walter Scott</b> , striped blue and white, large flower .....	15	90
254 <b>Versicolor</b> , violet striped, early .....	15	1 00

## Mixed Crocus

- 255 **Blue**, mixed shades, doz., 10c.; 100, 60c.; 1000, \$4.00.
- 256 **Variegated or Striped**, mixed, doz., 10c.; 100, 50c.; 1000, \$4.00.
- 258 **White**, mixed, doz., 10c.; 100, 50c.; 1000, \$4.00.
- 259 **All Colors, Mixed**, doz., 10c.; 100, 50c.; 1000, \$3.50.

## Mammoth Crocus

This Crocus produces a bulb nearly as large as a Tulip, and which bears from ten to twenty-five beautiful blossoms. They are the most beautiful and valuable of all Crocus, its marvellous profusion of bloom making it extremely desirable, both for pot and open ground culture. When in bloom last winter this Crocus was admired quite as much as some rare bulbs which cost ten times the price.

- 260 **Mammoth, White Queen**, per doz., 20c.; per 100, \$1.25, postpaid.
- 261 — **Purple Prince**, per doz., 20c.; per 100, \$1.25, postpaid.
- 262 — **Blue Giant**, " 20c.; " 1.25, "
- 263 — **Yellow**, " 20c.; " 1.25, "

## Bulbocodium Vernum

(SPRING COLCHICUM, OR MEADOW SAFFRON)

264 A charming early spring blooming plant, in flower two weeks before the Crocus. Producing masses of rose purple flowers; very beautiful for edgings and patches here and there, breaking up through the snow in juxtaposition with Snowdrops—is a charming sight, clumps of them can be dug up and potted in the winter, and placed in a sunny position, will soon be a mass of bloom. 4 for 15c.; doz., 35c.



LARGE FLOWERING CROCUS



# ALLIUMS

- 265 **Allium Neapolitanum.** A grand bulb for winter blooming. Its flower stems are 20 inches high, supporting a large cluster of delicate white flowers, which keep perfect many weeks. For bridal bouquets or funeral work these flowers are unsurpassed, having a delicate beauty peculiar to itself. They are sure to bloom splendidly in any window, and will be greatly admired. Plant three to six bulbs in a 5-inch pot and you will have a splendid object for fully a month in winter. 20c. per doz.; per 100, \$1.20.
- 266 **Allium, Molly or Golden.** One of the most showy and striking border plants, perfectly hardy, bearing large umbels of golden yellow flowers in June. A very old favorite, and fine for naturalizing in the garden, where it forms large clumps; height 1 foot. 5 for 10c.; 20c. per doz.; \$1.20 per 100.
- 267 **Allium Azureum.** A truly beautiful variety for pot or garden culture, being quite hardy, with flowers of deep azure blue, borne in umbels, 1 to 2 ft. high. 10c. each; \$1 per doz.
- 268 **Allium Hermitii Grandiflorum.** A splendid winter flowering and forcing variety; the flowers last a long time after being cut. The flowers are large, of immaculate whiteness, and continue to bloom from December to the end of April. 5 for 10c.; 20c. per doz.; \$1.25 per 100.

## BABIANAS

- 269 Were these to be offered as the "*Blue Gladiolus*," they would, no doubt, create a sensation—and why not? Most people would really take them as such, and, indeed, many of the varieties are far more beautiful and interesting. The six-petaled flowers are often alternately white and blue—sometimes the three upper petals are blue and the lower ones white; others are striped, blotched and bordered blue. Deep crimson, magenta, rose, violet, purple, lavender, mauve, are the colors represented in these. Best grown as a house plant—several in a pot. 3 for 10c.; per doz., 25c.



## GIANT CYCLAMEN

These are amongst the most beautiful and interesting winter and spring flowering bulbs for the window and greenhouse. Not only are the flowers of striking beauty, but the foliage is also highly ornamental, consequently they are very decorative even when not in bloom. Most of them are, moreover, delicately fragrant. The flowers of this magnificent strain are of extraordinary size for a Cyclamen, and of great substance. The leaves are proportionately large and beautifully marked. Easily grown, and sure to give satisfaction. (See cut.)

- 270 **Cyclamen, Giganteum Roseum.** Rose color, free bloomer.
- 271 —**Giganteum Album.** White.
- 272 —**Giganteum Rubrum.** Crimson.

Price for any of above, 20c. each; per doz., postpaid, \$2.00.

## DRAGON CALLA

(ARUM DRACUNCULUS)

The flowers of this remarkable plant are nearly a foot long, and of a purple, red and black color, with a blue stem, beautifully marbled. Leaves handsome, resembling a small Palm. It is a rapid grower, and makes a curious and ornamental pot plant. Price, each, 25c.; 5 for \$1.



BRODIAEA COCCINEA

## BRODIAEAS

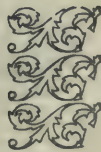
(THE CALIFORNIA FIRE CRACKER PLANT)

- 273 **Showy California bulbs.** The flowers are unusually long and tubular and borne in clusters on slender but strong stems, from 1 to 2 ft. high. They are of easy culture, and succeed well planted in pots and are hardy in most positions, especially in light, dry soils, though in northern climates it is safer to protect with a cover of leaves or litter, or plant in cold frame. It is sure to succeed and bloom elegantly with anyone. In this lovely flower our friends will find a most beautiful and novel thing, and unlike anything you have ever seen. **Brodiaea Coccinea.** A very handsome and distinct species, with blood red flowers tipped with greenish yellow. (See cut.) Fine bulbs, each, 8c.; doz., 80c.

## CHIONODOXA LUCILLÆ

(GLORY OF THE SNOW)

- 274 Although this most beautiful hardy plant was first found as long ago as 1842, it has only been introduced into cultivation within the past few years. The introducer, who discovered it in the mountains east of Smyrna, thus describes it: "At the lower level it was out of flower, but nearer the summit the mass was met in full splendor, forming one of the most sumptuous displays of floral beauty ever beheld, a mass of blue and white, most intense and brilliant." 3 for 10c.; per doz., 25c.



CYCLAMEN GIGANTEUM

**BE SURE TO ORDER SOMETHING.** Your name will then be entered in our books and you will receive a copy of our Handsome Illustrated Seed Catalogue for next year.



## NEW GOLDEN YELLOW CALLA, "Richardia Elliottiana"

275 Has the same habit of growth as the ordinary White Calla. With flowers of the same size and shape, but of a rich, clear, lustrous golden yellow color; the foliage is dark-green, with a number of translucent creamy-white spots, which add to its beauty. We have been fortunate in securing a limited lot at a special advantageous price, and are now in a position to offer good bulbs of the true variety at the low price of 75c. each.

### RED CALLA (New)

(ARUM CORNUTUM)

276 This exceedingly curious plant produces red flowers spotted with black, and is an object of attraction at all times. The stems are oddly mottled green and white; the foliage is very large, somewhat like a palm in appearance, and is very effective. It is quite easily grown, and will be sure to give satisfaction. Price, each, 25c.; 3 for 60c., postpaid.

New Sweet Scented

### CALLA "Fragrance"

The Fragrance of Violets and Lilies.

277 In this we have not only a charming and useful flower produced in a profusion never before surpassed, if equalled, in a calla, but also with a genuine, sweet, lasting fragrance, all its own, yet similar to that of violets and lilies, which has never before been obtained in Callas. Flower is of purest white; the foliage is also unique, being handsomely fluted. Each 25c.

### DWARF CALLA

278 **Calla, Little Gem, Nana Compacta.** Should not be confused with the Gem, being entirely distinct. It is indeed a "pigmy," scarcely ever exceeding the height of one foot, yet producing grand sized flowers in great abundance. Our stock of Little Gem Callas has been procured direct from the originator of this variety. The flowers will be found exceedingly useful for cut flower work, and will be grown by the millions. Each, 20c.

### WHITE CALLA

(LILY OF THE NILE)

A well-known plant of easy culture, and in winter is one of the best of our window plants. The only special treatment it requires is abundance of moisture. Give the leaves an occasional syringing to clear from dust; water with tepid water, and keep in a warm room. To aid profuse blooming, keep them dormant during the Fall and report in November.

279 **White Calla Lily,** good sized bulbs, each, 12c.; doz., \$1.25.

280 **White Calla Lily,** large bulbs, each, 15c.; per doz., \$1.50.

281 **White Calla Lily,** Mammoth, each, 30c.



### SPOTTED .. CALLA

(RICHARDIA ALBA MACULATA)

282 **Spotted Calla.** This beautiful and popular variety gives the greatest satisfaction. The leaves are rich, deep green, finely spotted, with white. Thus the plant even when not in flower is ornamental. It is easily grown, very distinct, free to bloom, and in all other respects is like the favorite old Calla. 2 or 3 Bulbs may be grown in a 5-inch pot (Ready November). (See Cut). Bulbs, each, 15c.; per doz., \$1.50, postpaid.

### BLACK .. CALLA

(ARUM SANCTUM)

283 The plant produces one large flower the shape of a Calla, and from 14 to 18 inches long, and four inches broad, and of a rich dark purple color, green underneath, somewhat wavy at border, and curled at the smaller end. The spathe rising from the centre of the flower is about 10 inches long, velvet like and quite black. It is raised on a slender but vigorous stalk of brown-red, shading to green at the upper end. The leaves are large and very wavy, of a rich green color, veined light green. Most stately and elegant in appearance. (See Cut). Price, large bulbs, each, 20c.



### GRAPE HYACINTHS

This charming little gem should be found in every garden in abundance.

284 It has been termed the "Lily of the Valley," and when planted in a mass with that sweet flower, it does resemble it to some extent, and forms a most fascinating combination. It grows about the same height and blooms about the same time each spring. Plant 5 or 6 bulbs in a 5-inch pot, and you will have as lovely a pot bloom as you can imagine. Flower stems grow a foot in height, bearing a dense spike of sky-blue bells tipped with white, and oh, so lovely! blue and white mixed, 4 for 10c.; doz., 15c.; 100, \$1.00. Postpaid.



# The True Bermuda Easter Lily

"LILIAM HARRISII,"

One of the Grandest Winter-flowering Plants in Cultivation.

Pure pearly white, deliciously fragrant, and a remarkable profusion of bloom characterize this charming and celebrated Easter Lily. Its popularity and sales have increased wonderfully and deservedly, for, without exception, it is one of the most valuable bulbs for winter flowering in the house. A profusion of bloom may be had from Christmas until spring, if a number are planted and "brought in" at different times. Bulbs after flowering can be ripened and rested a couple of months by withholding water, and will then produce another crop of flowers frequently equal to the first. It is a magnificent variety for church decorations at Easter, and tens of thousands are grown for this purpose. Flowers are pure white, 4 or 5 inches long (and frequently more) and of most delicious fragrance.

To have a succession of bloom. At least a dozen bulbs should be used; more would give a greater display. A portion of the pots can be brought into the house, after the bulbs are thoroughly rooted, which requires about six weeks' time. Place in a sunny position, and the lilies will flower in a temperature of from 60 to 70 in about eight weeks afterwards; if the temperature is warmer they will flower sooner. For succession of bloom a few pots can be "brought in" at intervals of two or three weeks.

285 **Lilium Harrisii.** Price, 5 to 7 in. in circumference, 10c. each; \$1 per doz. Large bulbs 7 to 9 in. 15c. each; \$1.50 per doz. Mammoth bulbs, 30c. each; 3 for \$0c.; doz., \$3., postpaid.

### LILIAM LONGIFLORUM

286 Very similar to Lilium Harrisii; preferred by some to that variety on account of its better growth of foliage, dwarf and stocky habit. 15c. ea., \$1.50 doz., postpaid.

### LILIAM AURATUM, The Golden Banded Queen of Lilies

287 Ivory white ground, richly strewn with purple studs. The centre of each petal has a broad band of yellow extending from tip to base. We offer this season a large stock of this peerless variety, which beyond question is the grandest of the Lily family. Fully expanded the flowers nearly measure a foot across, are produced abundantly, and possess a most delicious fragrance. Large bulbs, 20c. each; 2 for 35c., per doz., postpaid, \$1.75.

### LILIAM CANDIDUM (The Hardy White Garden Lily)

288 This Lily is the emblem of purity. The deep lemon anthers contrast beautifully with the wax-like petals. The fragrance is delicious and never oppressive. 10c. each; 12 for \$1. pots paid.

### LILIAM SPECIOSUM MONSTROSUM RUBRUM

289 White ground with band and spots of rose and crimson on each petal. One of the best Lilies. We have a splendid stock. Price, 15c. each; per doz., \$1.25. Large bulbs, 20c. each; per doz., \$1.75, postpaid.

### LILIAM TIGRINUM FLORA PLENA

290 **Double Tiger Lily.** This is a plant of stately habit, growing from 3 to 5 feet high, bearing an immense number of double bright orange-red flowers, spotted with black. Blooms in August. 10c. each; 3 for 25c.; per doz., \$1, postpaid.



CANDIDUM LILY

### LILIAM ELEGANS, Mixed

291 Embracing beautiful and distinct new varieties, which both for pot culture and for masses of color in the open garden are unsurpassed. All are early flowering, and are sure to bloom in June or July. They are very hardy, and grow and thrive under almost any conditions. 15c. each; 12 for \$1.25, postpaid.

### LILIAM SPECIOSUM ALBUM

292 The well known fragrant hardy Lily. Flowers bell-shaped, petals curving backward, pure white and light green rib in centre of petals. Height 4 to 4½ feet, blooms in June and July in the open ground. Price, medium size, 15c. each; per doz., \$1.25. Large bulbs, 20c. each; per doz., \$1.75, postpaid.

## FREESIAS OR AFRICAN LILY OF THE VALLEY

Its sprays of chaste white flowers among the green foliage give it the appearance of an immense Lily of the Valley, with a fragrance far more delicate and pleasing. Flowers are two inches long and about the same in width, shaped like a miniature Gladoli, and borne in clusters of six to ten, on depressed horizontal scapes. The body of the flower is pure white, with lower segments spotted lemon-yellow. The perfume is most delicious, being a mixture of Mignonette, Violet and Jessamine, and one plant is sufficient to perfume a large room. The flowers are particularly useful for cutting as they will keep in a good condition for a week. Its cultivation is of the simplest. It requires only to be potted in October, to be watered sparingly at first, placed in a sunny window and watered more as growth progresses. When out of flower store in some dry place, and repot at proper season in fresh soil.

293 **Freesia Refracta Alba,** the flowers are pure white with a yellow blotched throat and are exquisitely fragrant, fine bulbs. 4 for 10c.; 20c. per doz.; \$1.25 per 100.

294 **Freesia, Mammoth,** very large bulbs, 3 for 10c.; 30c. per doz.; \$1.50 per 100.

295 **Freesia, Large Yellow,** (Leichtlini Major); 3 for 10c.; per doz., 30c.

## SCARLET FREESIA (ANOMATHECA CRUENTA)

296 A charming plant for either pot culture or for blooming out of doors; their dwarf nature, brilliant and profuse bloom, continued for a long period, render them very popular; flowers bright rosy carmine, blotched with crimson. Height 3 feet; 3 for 10c.; 30c. per doz. (November).



LILIAM HARRISII



FREESIAS



# IRIS, or Flowering Flag

**297 Japan Iris (*Kamsheri*).** The magnificence of these splendid new Iris surpasses description; in beauty, size of flower, richness of coloring they are grand. The flowers are of enormous size, averaging from 6 to 8 inches across, and are of indescribable and charming hues and colors, varying like the watered silk in the sunlight; the prevailing colors being white, crimson, rose, lilac, lavender, violet and blue, each flower usually representing several shades, while a golden yellow blotch surrounded by a halo of blue or violet at the base of the petals, intensifies the wealth of coloring. The Japan Iris is hardy; flowers in great profusion in June and July. Attains greatest perfection if grown in moist soil, or if plentifully supplied with water while growing and flowering. Each, 25c.; per doz., \$2.50. Ready in November.

**298 English (*Angelica*).** Large, handsome flowers with rich purple, blue and lilac colors predominating; grows 18 to 20 inches high; perfectly hardy; mixed varieties, 3 for 10c.; per doz., 30c.; per 100, \$1.50.

**299 Spanish (*Hispanica*).** This variety is well adapted for pot culture, blooming in the winter, earlier than the above but smaller; beautiful shades of violet, yellow, blue and white. 4 for 10c.; 20c. doz.

**300 Germanica.** This is one of the grandest classes of Iris. Plants form dense clumps which send up many flower stalks, each one bearing several large beautiful flowers of various colors. No garden should be without them. They bloom early and are very sweet; each, 10c.; per doz., \$1.00.

## FRITILLARIA MELEAGRIS

(SNAKE'S HEAD OR GUINEA HEN FLOWER)

**301** A beautiful group of spring flowering plants, bearing bell-shaped flowers of various colors—yellow, white, black, purple, striped and splashed, and chequered in the most curious way. Being perfectly hardy, they are beautiful subjects in the mixed flower border, where they can remain undisturbed for several years; they should be in rich soil and in a dry locality. As pot plants they are very desirable; should be grown in a cool place. Mixed varieties, 3 for 10c.; per doz., 25c.; per 100, \$1.50.



FRITILLARIAS.

## LACHENALIA

**304** A beautiful class of bulbs from South Africa, which have not been much in cultivation yet, owing to their scarcity. They will usually succeed in the open ground with good protection, but are grown mainly for winter blooming in pots. They require exactly the same treatment as Hyacinths. The flowers are borne in beautiful spikes, and they remain in bloom for about two months. The colors are a curious and odd blending of yellow, scarlet and shades of olive green, shading to yellow, etc. Choice mixed varieties, each, 15c.; per doz., \$1.50.

## SAUROMATUM SIMLENSE

OR "SNAKE LILY"

**305 Sauromatum Simlense.** A most wonderful bulb, bearing a very remarkable flower 30 inches in length, the inside of which is of a peculiar golden color, profusely spotted with rich purple and brown blotches, while the back is of a metallic brown. Altogether one of the strangest flowers ever seen. The foliage is also highly ornamental, and fine palm-like leaves, 3 to 4 feet high and wide, being produced in succession during the entire season. The leaf-stock is beautifully mottled with black markings. The flowers are produced from January until June, almost immediately after planting. Plant in pots, or in the garden, 6 inches deep; give plenty of water. This is a bulb that we can highly recommend; is of easy growth, luxuriant foliage and curious flowers make it very attractive. Large size bulbs, each, 25c.



## IXIAS

**302** The Ixias produce their beautiful flowers in spikes, and are of the most dazzling and brilliant colors. For open ground culture give them winter protection with leaves or straw. Plant the bulbs in October, 4 or 5 together in a pot. (See cut.) Fine mixed varieties, various colors. 3 for 5c.; doz., 15c.; 100, \$1.

ENGLISH IRIS

## SPARAXIS

**303** Large and beautiful, blooms about two inches across, of the most telling combinations, and of brightest shades of color; they are tigered, blotched, spotted, streaked and flushed. Not hardy. Do well in conservatory or house. Mixed, 2 for 5c.; doz., 20c.; 100, \$1.25. (See cut.)



IXIAS AND SPARAXIS



**GLADIOLUS**

For autumn planting or winter forcing. They bloom in June and July if planted in the autumn in dry soil and covered with about 6 inches of straw. If planted in cold frames they will flower as early as May. The flowers are smaller than those of the autumn flowering Gladiolus. The bulbs can be kept dormant until spring and planted in the open ground if preferred. (*Ready in November*).

306 **Gladiolus, The Bride.** (*Colvilli Alba*), very beautiful, purest white flowers. Price, 3 for 10.; 30c. per doz.; \$1.30 per 100.

**GLOXINIAS**

Most charming green house plant, of dwarf habit. Their flowers are produced in greatest profusion—often 3 or 4 inches across—and are of the most exquisite and gorgeous colors, many of which are magnificently spotted, mottled and blotched. Under the commonest culture they bloom continuously for months, and by starting at intervals a succession of splendid flowers may be had nearly the whole year round. They are also exceedingly useful if planted out in a warm frame and shaded from the bright sun, for cut flowers during the summer months. (*See cut. Ready in November*).

307 **Gloxinia, Scarlet, Blue, White, Spotted, or in mixed varieties.** Each, 15c.; doz., \$1.50.



GLOXINIA



GLADIOLUS

**SPRING SNOWFLAKES**

308 These produce flowers like monster snowdrops, having the delicate fragrance of the Violet. It is one of our earliest spring flowers, with white blossoms distinctly tipped green; handsome in outline and prized for bouquets. Very graceful in growth they should be grown in quantities in the borders or in the clumps on the edges of shrubbery, where they are beautifully effective, and when established produce enormous quantities of flowers. They can also be forced in pots for winter bloom. (*See cut*). 3 for 10c.; per doz., 30c.; per 100, \$2.



SPRING SNOWFLAKE

**NERINE, OR GUERNSEY LILIES**

309 These beautiful Lilies are the most popular and useful of the Amaryllis family; perhaps no bulb blooms with more certainty and swiftness after potting; for autumn and winter flowering they are extremely beautiful, throwing up stems 18 to 24 inches, surmounted with clusters of lily-like flowers about 2 inches across; colors very brilliant. Price, each, 20c.; 3 for 50c.

**DIELTRA, OR DICENTRA**

(BLEEDING HEART)

A superb plant, without which no garden is complete. The flowers are borne on long, graceful curved stalks, hanging like rows of pendant gems, delicate rose-colored and white, with purple lips, and presenting when in full bloom a wondrously beautiful appearance. It will endure the coldest winter without protection and is also excellent for cut flowers in winter, forcing very readily.

310 **Dicentra Spectabilis.** Strong roots, specially grown for forcing. Each, 15c.; 4 for 50c.

**CAMASSIA ESCULENTA**

311 A lovely bulbous flower. It is as hardy and robust as a tulip, producing each spring tall graceful spikes of lovely blue flowers, resembling to some extent the Hyacinth, though more graceful. It is a magnificent pot bulb for winter blooming; 3 for 10c.; doz., 30c.

**RANUNCULUS**

312 **Double Giant French Ranunculus.** Greatly improved varieties with perfectly double flowers of dazzling and varied colors. The most robust of all Ranunculus, and make fine pot plants for winter flowering. Should be grown slowly and kept in a cool, moist atmosphere. Ranunculus planted out of doors require a liberal covering, as they are not quite hardy. Bloom in June in the garden, and require a deep, rich, loamy soil. Good drainage is essential. Mixed colors, 2 for 5c.; doz., 30c.; 100, \$1.20.

313 **Turban Ranunculus.** Are even more varied than the French, comprising nearly every shade of white, crimson, yellow, purple, etc., but are not so large flowered, nor so robust in habit. Flower profusely in pots in house, or if grown in frames in spring. Per doz., 25c.; 100, \$1.50.

314 **Double Persian Ranunculus.** These are as beautiful as Turban varieties, but quite distinct, producing similar flowers, but blooming later. Mixed, doz., 20c.; per 100, \$1.20.

**BE SURE TO ORDER SOMETHING.**—Your name will then be entered in our books and you will receive a copy of our Handsome Illustrated Catalogue for next year.



## LILY OF THE VALLEY

(CONVALLARIA MAJALIS)

This beautiful plant is a universal favorite. It is extensively grown for forcing in the winter and early spring months, producing tender stems, set with tiny bells of snowy whiteness, diffusing a delicate odor. It may be planted in-doors in baskets of moss, boxes and vases; plant in November and December. (*Ready in November*)

315 **Lily of the Valley.** Berlin single crown pips, pure white, large and strong, finest for forcing, 3 for 10c.; per doz., 25c.; 100, \$1.50.

316 **Lily of the Valley.** Strong imported clumps, containing a number of large, strong crowns or pips. Each 25c.; by mail, postpaid, 40c.; per doz., \$2.40 by express at purchaser's expense.

## ERYTHRONIUM GRANDIFLORUM

(DOG'S TOOTH VIOLET)

317. **Dog's Tooth Violet.** This beautiful plant is perfectly hardy, the foliage is charmingly variegated, and a mass of 15 to 20 plants is a pretty sight even when not in flower; but when the graceful spikes of 2 to 4 creamy white flowers are in bloom the effect is matchless. The plants luxuriate in rather moist, partially shaded situations, and do very nicely when grown in pots. Colors range through crimson, white, rose, purple, etc. Mixed colors, 4 for 10c.; per doz., 35c.



LILY OF THE VALLEY

## CROWN IMPERIALS

(FRITILLARIA IMPERIALIS)

An old and well-known spring-blooming plant, with clusters of pendant bell-shaped flowers surmounted by a tuft of green leaves; it is very effective in mixed borders and centres of beds. They succeed well in any soil. Plant about 4 inches deep and 1 foot apart.

318 **Mixed Varieties**, each, 15c.; per doz., \$1.50.

## ORNITHOGALUM

319 **Ornithogalum Arabicum.** The Arabian Star of Bethlehem.

Bulb large and solid, closely resembling that of a Hyacinth and requiring exactly the same culture; leaves long and narrow; flower spikes, 18 to 24 inches high, strong and graceful, bearing an immense cluster of large pearly white flowers, having a jet-black centre. The individual flowers keep perfect many weeks before fading. Its durability is almost without equal among flowers. Add to this its delicate, aromatic fragrance and we have a winter bloomer which all must admit stands without a rival. For open ground culture they do well if protected from freezing severely. No bulb is more valuable for winter blooming than this. Each, 10c.; per doz., 75c.

310 **Ornithogalum Umbellatum.** The True Star of Bethlehem. Blooms about the middle of spring. Flowers borne in umbels on stems six inches in height; satiny white inside and white with a green stripe outside; very pretty, a free bloomer and quite hardy. 3 for 10c.; per doz., 30c.



CROWN IMPERIAL

*Fritillaria Imperialis.*

## TROPÆOLUM

311 **Tropæolum Tricolor.** A tuberous rooted, winter-blooming Nasturtium for pot culture. Pot bulbs in good soil, and treat them like other winter bulbs, but do not be discouraged if they are slow to start. They throw up little needle-like shoots which should be supported, and develop beautiful tiny foliage, followed by hundreds of brilliant flowers—scarlet, tipped with black and yellow—which keep perfect a long time. 15c. each; 2 for 25c.

## GIANT CAPE HYACINTH

(GALATONIA OR HYACINTHUS CANDICANS)

312 This plant somewhat resembles the Yucca, although not so large. It throws up a flower stem about 4 feet high, on which it bears from 20 to 30 pure white bell-shaped flowers. They are very gracefully hung, forming an almost perfect pyramid. They are quite hardy, but it is well to give them a slight covering for winter. Strong bulbs, each, 10c.; per doz., 90c. (*Ready in November*).

## WINTER ACONITE

313. Early in the spring golden blossoms of the Winter Aconite look charming, resting on an emerald green cushion of leaves, and forming a striking contrast to the pure white Snowdrops, Spring Snowflake and the lovely blue Scillas and Chionodoxa. The foliage remains long after the flowers, making the plant especially valuable in situations such as under trees, and in moist situations, which the Winter Aconite enjoys, and where other flowering plants thrive. 3 to 8 inches high. 4 for 10c.; per doz., 20c.; per 100, \$1.25.





**SNOWDROPS (GALANTHUS)**

In the early spring months there is nothing more beautiful than a sheet of the snowy, graceful blossoms of the Snowdrop. Beds with effect of surpassing beauty may be ranged with Snowdrops in the centre, edged with bright blue Scilla Siberica or Chionodoxa Lucillia, or by intermingling them. When practicable such plantings of the Snowdrop should be permanent. The Snowdrop and Crocus when planted in alternate circles, are very effective, and follow each other so closely that no gap is left in the succession. In beds of Tulips and Hyacinths, Snowdrops are very effective between the lines; they flower while these bulbs are just moving the surface, and when the flowers are over there remains an elegant ground work of green foliage.

- 314 **Single Snowdrops**, 3 for 5c.; per doz., 15c.; per 100, \$1.00.
- 315 **Double Snowdrops**, 3 for 10c.; per doz., 30c.; per 100 \$1.75.
- 316 **Elves' Giant Snowdrops**. One of the finest of the genus, at least three times the size of the ordinary single Snowdrop, flowers slightly marked with green spots; very fine for cutting, and slightly sweet scented. 3 for 5c.; doz., 15c.; 100, \$1.

**SPIRÆA (READY IN NOVEMBER)**

- 317 **Spiræa, Gladstone (New)**. Produces enormous spikes of pure white flowers in great profusion. Foliage is of a beautiful green. The best of the Spiræas. Each, 30c.; postpaid, 35c.
- 318 **Spiræa, Japonica**. A perfectly hardy herbaceous plant. From dark green leaves arise numerous clouded panicles of feathery white flowers. Largely grown in pots and splendid for cutting. Strong clumps, 20c. each, postpaid; \$1.20 per doz., by express at purchaser's expense.



- 319 **Spiræa, New Large Flowering**. Flowers freely during the summer, is perfectly hardy, and grown in pots for window and greenhouse decoration it is indispensable for cut bloom. Its merits consist in compact growth, ample foliage of brilliant green, and its wonderfully free production of feathery white flowers. Strong imported clumps. Price, each 20c., postpaid, per doz., \$1.25, by express at purchaser's expense.
- 320 **Spiræa, Astilboides Floribunda** is dwarfier and much more graceful than Spiræa Japonica. The flowers are produced in greatest profusion. Elegant, dense, pure white plume, well shown above foliage. Strong clumps, each, 20c., postpaid; doz., \$1.25, by express at purchaser's expense.

**MAMMOTH CUBAN LILY or (Scilla Clusi)**

- 321 **Scilla Clusi**. This is without doubt one of the best winter blooming bulbs for house culture, and is also one of the easiest cultivated and surest to bloom, requiring the same culture, as Hyacinths in pots. It produces an enormous cluster of star-shaped blue flowers often 3 feet in circumference. One of the most striking flowers we ever saw. The bulbs are of good size and sure to bloom. It is also hardy and desirable for garden culture. Price, Mammoth bulbs, 25c. each; 3 for 60c.; large bulbs, 15c. each; 3 for 40c.
- 322 **Scilla Siberica**. (Ammœa or Præcox). One of the most beautiful hardy spring bulbs, producing in profusion masses of exquisite rich blue flowers almost before the snow has disappeared. If grown in masses, their flowers fairly carpet the ground; and if grown with Snowdrops and Crocus, for contrast, the effect is magnificent. They should be largely planted as undergrowth in Hyacinth beds, etc. Grown in pots they may be had in bloom from Christmas until April. 3 for 10c.; 25c. per doz.; \$1.50 per 100.



SCILLA CLUSI  
HYACINTH GLASSES

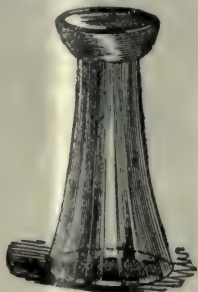
Can only be sent by express at purchaser's expense. Cannot be mailed.

Hyacinths grown in glasses of water are charming ornaments for parlor windows, and the ease and success in flowering bulbs in this way add greatly to their popularity. Polyanthus Narcissus, Amaryllis Formosissima, and a few other bulbs can be grown in the same manner.

- Tall, or Belgian**. This is a favorite style; they come in various plain colors. Each, 20c.; \$2 per doz.
- Tye's shape, Plain**. An improved shape—not so easily tipped over—in plain colors. Each, 20c.; \$2 doz.



TYE'S SHAPE (Plain)



TALL, OR BELGIAN



SPIRÆA ASTILBOIDES FLORIBUNDA

**Egyptian, or Perennial Tree Onion.**

These are for fall planting, very hardy, and a great favorite, producing green Onions in the early spring. Per qt., 25c.; per bush., \$2, by express at purchaser's expense





## TUBEROSES

- 323 **Tuberoses "Excelstor Pearl."** The flowers of this well known and popular plant are waxy white, double, so fragrant as to perfume the whole atmosphere some distance around. To grow tuberoses fill 5-inch pots half full of cow manure, the remainder with rich good earth mixed with sand. Plant bulbs early, water moderately, hasten growth by putting in a warm, light place. (*Ready in November.*) First size bulbs, especially selected for our retail trade. Price, each, 5c.; per doz., 50c.; per 100, by express, \$2.25.

## OXALIS

These beautiful varieties of Oxalis are all for winter blooming. They make the most beautiful hanging pots and baskets. Plant five or six bulbs in a six inch pot. They commence growth immediately after planting. Bloom the entire winter.

- 325 **Oxalis Multiflora Alba.** Pure white, free bloomer, 3 for 10c.; doz., 30c.
- 326 **Oxalis Bowl.** Deep pink, large; robust and fine. 3 for 10c.; doz., 30c.
- 327 **Oxalis, Bermuda Buttercup.** This is one of the finest winter flowering plants for pot culture that we have ever seen; it is such a strong luxuriant grower that one bulb will be sufficient for a four or five inch pot. The flowers are of the purest bright buttercup yellow. Well grown plants have produced as high as seventy flower stems at one time, over 1,000 flowers in one season. Properly treated plants will flower in six weeks from the time the bulbs are planted. 3 for 10c.; doz., 35c.
- 328 **Oxalis Hirta Rosen.** Deep red, fine. 3 for 10c.; doz., 30c.
- 329 **Oxalis Versteolor.** Rose and white, lovely color. Very beautiful. 4 for 10c.; doz., 25c.
- 330 **Oxalis, Double Yellow.** This beautiful Oxalis is a free bloomer, and bears large double flowers as perfect as double Daisies. Color, brightest yellow. It is extra valuable on account of its novelty and beauty. Each, 5c.; doz., 50c.

## Our 50c. and \$1.00 "SURPRISE" COLLECTIONS

TO meet the demand of our large trade, we import very large stocks of bulbs, in most cases getting more than needed to make sure of having enough. After business is about over, in November, we sell off our surplus stock at a sacrifice. The thought has occurred to us to make this surplus up into "Surprise" Collections, and offer them to our customers, giving them many times the value of their money. The "Surprise" comes in the great amount of fine bulbs you get for the money paid. **These Collections cannot be sent out until Nov. 10th,** and will be entirely our own selection from kinds of which we have a surplus. No collection will be made up for less than **50 cents,** and from that up to any amount the purchaser may desire. In all cases one will be surprised at the amount of fine bulbs they get for the money. They will be sent free by mail. All "Surprise" Collections ordered previous to November 10th will be booked and shipped about that date, but we can continue sending them through November and December.

## CHINESE PÆONIES

The old-fashioned pæony has long been an inhabitant of our gardens. They are among the hardiest flowers we have, and are admired for their large and gay flowers, which are produced in the early summer. We have this season imported, direct from the most celebrated grower in the world, the finest collection obtainable in any list, including new and rare flowering sorts, and many unique and gorgeous double varieties in various shades of colors and markings, and some with very delicious fragrance. The best season for planting Pæonies is the spring; they will succeed in any ground unless so wet that the water will lie on the surface; but to obtain the greatest size of bloom and strongest growth the soil should be well enriched.

### SELECT NAMED VARIETIES

- Pæony, Anemoneflora.** Crimson. Free flowering; one of the best.
- Buechl.** White, yellow centre, extra fine flowers.
- Modest Guerin.** Light purplish rose, delicate lilac shading; very double.
- Louis Van Houtte.** Rich purple lake; a noble variety; extra full and free.
- Mad Brion.** Yellow, diffused with white and rose; novel.
- Tenuifolia Simplex.** Deep red, very double.
- Festivia Alba.** White, lightly tinged yellow centre.
- Mutabilis.** Pure white; strong grower, beautiful broad foliage; early, very best white for cutting.

The above named varieties, each, 25c., or 5 for \$1.



DOUBLE PÆONIES



HOUSE PLANTS, FOR WINTER DECORATIONS



ASPARAGUS SPRENGERI

ASPARAGUS SPRENGERI

A most desirable new species, especially useful to grow as a pot plant for decorative purposes or for planting in suspended baskets; the fronds are frequently 4 ft. long, are of a rich shade of green and most useful for cutting, retaining their freshness after being cut for weeks. It will make an excellent house plant, as it withstands dry atmosphere and will succeed in almost any position. No introduction of recent years has made such a favorable impression as this graceful Asparagus. Each, 15c.

ASPARAGUS Plumosus Nanus.

This graceful climbing Asparagus has to a great extent taken the place of the once popular Smilax in all fine decorations. It possesses the advantage of being much more graceful, its foliage being finer than that of the most delicate fern, and will last for weeks after being cut, the whole plant being of a bright, cheerful green. It is an excellent plant, succeeding under almost any conditions. 20c. each.



UMBRELLA PLANT

EUPHORBIA or THORN PLANT

Not many plants will give greater satisfaction than this, because of its easy growth and beautiful coral red flowers produced in abundant trusses during the entire season and especially in winter, when flowers are scarce, and well set off by its clean, green foliage. The stems are not so thorny, but they can be trimmed into various graceful forms, as shown in cut. The Japanese have procured some wonderful examples in that line. Altogether it is sure to please, no matter how grown. Price, 20c. each; 3 for 50c.

SMILAX

A very graceful climber, possessing the rare qualities of delicate and tolerably dense foliage and twining habit, admirably adapting it to climbing or drooping, as may be required. It is also fine as a parlor or window plant. 10c. each; 6 for 50c.



CHRYSANTHEMUM

AZALEAS

These are the finest of all winter blooming house plants. This handsome shrub is carefully trained and prepared for blooming. The form is symmetrical, and the size 12 to 14 inches across. When the flowers, which are about 2 1/4 inches in diameter, open, the whole plant is a mass of showy bloom. The color varies from pure white to deep crimson scarlet. The plants ready for delivery about Nov. 10th. Price, each medium, 75c.; large, \$1.50 by express at purchaser's expense.

CHRYSANTHEMUMS

To enable all our customers to see what a beautiful display these plants will make in fall, we offer a grand assortment at very low prices. For full particulars of colors and varieties see our Spring Catalogue, page 43. The plants we offer are coming into bloom, and will make a grand display during October and November. Price, 35c. each, \$3.50 per doz. (Cannot be mailed.) Prices for larger quantities on application.



AZALEA

CYPRUS or Umbrella Plant

A strikingly handsome plant, suitable for the house, of easy culture and sure to give you complete satisfaction. It reproduces itself from the roots, and may be subdivided. Each, 15c.

SANSEVERIA ZEALANICA

A beautiful plant, splendidly adapted for house decoration, as it stands drought and dust. The leaves grow to a length of 3 to 4 feet, and are beautifully striped crosswise with broad, white variegations on a dark green ground. It is a rare and beautiful plant, which should be abundantly grown for positions out of the reach of sunlight, where other plants will not thrive. Each, 20c.

FARFUGIUM GRANDE

(Leopard Plant)

A grand decorative plant with round, thick, leathery leaves marked with large yellow spots, contrasting beautifully with the dark green ground work, extra fine for shaded rooms where few variegated plants will retain their color or markings. This is as easy to grow as a Geranium. Each, 25c.



FARFUGIUM GRANDE

All plants postpaid except where noted.





ARAUCARIA EXCELSA

### ARAUCARIA EXCELSA

(NORFOLK ISLAND PINE)

Various names have been suggested for this grand plant to properly convey to the mind the appearance of it. Some have called it the "Christmas Tree Palm" from its resemblance to a Christmas Tree; others have called it the "Star Palm," because the leaves are arranged to form a perfect star, but no descriptive name can give any adequate idea of its beauty. It has deep green feathery foliage, arranged in whorls, rising one above the other at regular distances; its symmetry of form, grace and beauty of foliage are unequalled in the plant kingdom. It is easily grown in the house, and is highly ornamental. Price, 15 to 18 ins. high, \$1.40., postpaid.



RUBBER PLANT

### FICUS OR INDIA RUBBER TREE

Nothing better for table or house decoration. Its dark green shiny foliage is always handsome, and its constitution is such that it is able to stand the excessive heat and dryness of the ordinary dwelling house without injury. Plants, 12 to 15 inches, each 75c., postpaid.

### CARNATIONS

FOR WINTER BLOOMING

The Carnation is both beautiful and fragrant, and gives plenty of flowers for a long time. The ever-blooming varieties are admirable for winter flowers in the house, and are the main dependence of the florist for the preparation of floral ornaments.

**Crane.** A pure light scarlet; flowers very full and perfect shape. One of the best reds cultivated because it begins to bloom early and gives good supply of flowers steadily throughout the season; stems long and stiff. 20c. each.

**Flora Hill.** Probably the best known of all white Carnations. Entirely free from disease, and will furnish more flowers than any other white variety grown. 20c. each.

**Morning Glory.** Color slightly darker than Daybreak, but an improvement in every way. Large perfect flowers, on long wiry stems. A very free continuous bloomer. This variety is crowding out Daybreak wherever grown. Each, 20c.



CHENILLE PLANT

### CHENILLE PLANT

(ACYLPHA SANDEKI)

The most sensational new plant introduced for many years, and one of the most striking flowering ornamental plants we have ever seen. It is of strong free growth with large dark green leaves, from each axil of which one or two feet long and nearly one inch thick rope-like spikes of velvety crimson flowers are gracefully suspended as shown in our illustration, which conveys but a faint idea of the beauty and distinct warm coloring of this splendid acquisition. The plant is in flower the year round and is as easily grown as a coleus. Each, 25c.

### PERENNIAL PHLOX

For hardy clumps of brilliant colored masses of flowers on lawn or among shrubbery, Hardy Perennial Phlox takes the very first rank. The great showy heads or panicles of bloom are produced and multiplied in gorgeous profusion from midsummer until checked by frost. Named varieties, assorted colors, 15c. each; 6 for 75c.

### AMERICAN WONDER LEMON

The Wonderful New Lemon

Nothing that has ever been brought to our notice in the plant line has caused one-half the commotion that this wonderful lemon has. It is a true ever-bearing variety. The tree has fruit in all stages of development, from the size of a pea up to the ripe fruit, showing it to be a true ever-bearer. Fruit has been taken from a tree weighing over four pounds. In addition to its fruit bearing qualities it makes a handsome plant for house culture. The dark green foliage is very large and handsome and the pure waxy flowers, with yellow stamens, are nearly as fragrant as orange blossoms, which they greatly resemble. Plants, each, 25c., post paid.



PONDEROSA LEMON

### OTAHEITE ORANGE

A very beautiful pot plant, with glossy, ever-green leaves, and producing flowers as large as the regular orange blossoms, and with the same delicate sweet fragrance, and bears a small pretty fruit resembling a miniature orange, that will remain on the little bush like balls of gold for many weeks after they are ripe. As a window plant they are unique, and we know of no other that is more attractive; its delicate leafy sprays of bloom are indescribably dainty and fragrant. It is as easily managed as an ordinary Geranium. Plants, 25c. each.



CARNATION



# PALMS, Etc.

A few Palms and other decorative plants are most useful and ornamental in the window or parlor; they are hardy, easily managed, and will repay the small cost. No class of plant is in greater demand, and that our customers at a distance may obtain them, we will send any of the sizes under 20 inches high by mail, postpaid; those of 20 inches and upwards are too large for mailing; they can be sent only by express, purchaser paying carriage. We carry a large supply at all seasons of the year.

## KENTIA BELMOREANA

This is sometimes called the Curly Palm, and is recognized as among the best for all purposes, being capable of standing more ill-usage perhaps than any other. The leaves have a tendency to curl as the plant grows older, hence its popular title of Curly Palm. Price 15 to 18 inches, with five leaves, \$1.00, postpaid; 20 to 24 inches, with 8 to 8 leaves, \$1.75; 24 to 30 inches, \$2.50; 30 to 36 inches, \$4.00; by express at purchaser's expense.

## KENTIA FOSTERIANA

The Kentias are among the best of the Palm general species for cultivation, being almost impregnable against disease. The variety known as the Fosteriana is one of the best of its class, graceful habit, bright green foliage, gracefully disposed; as a decorative plant for the window, dinner-table, or conservatory, it scarcely has an equal. Price, 15 to 18 inches; 4 to 5 leaves, \$1.00 each, postpaid; larger plants, 24 to 30 inches high, \$1.50; by express at purchaser's expense.

## LATANIA BORBONICA

This is the typical Palm, and is more largely used than any other. Its strong, healthy habit commends it to all, and gives it a fitness for window and room culture not possessed in the same degree perhaps by any other. Fine plants, 15 to 20 inches, 75c. each.

## CYCAS REVOLUTA

This is the so-called Sago Palm, and is sometimes called the Japanese Fern Plant. The leaves, which are like Fern fronds are remarkable for their great beauty which is retained for years, as the leaves do not die and drop off every year. While the frond-like leaves are of most graceful appearance, they are also of a firm, strong texture and difficult to injure. They are of a dark, deep green, and look as if varnished. It may well be termed "a family plant," as it lives to a great age, growing finer and more valuable every year. As a decorative plant, both for indoor and outdoor (in summer) use, it is without a rival, for its noble and majestic habit is most impressive; it is very hardy, its heavy, glossy fronds resisting alike the gas, cold and dust. Pots should be well drained and water applied sparingly during the winter. We offer fine plants, \$1 to \$5 each, by express at purchaser's expense.



BEGONIA REX

## BEGONIA REX

We offer ten of the most distinct and handsomely marked varieties of this class of Begonias. These are grown for their variegated foliage, and are very desirable for house and garden decorations in shady positions, and especially well adapted for baskets, vases, etc. Price, each, 25c. (See cut).

### PREPARED PLANT SOIL

It is very inconvenient for those living in cities and towns to obtain suitable soil for repotting plants. To meet such want we supply a specially prepared soil, properly fertilized, and containing all the elements of plant food. Price, 25 lbs. for 30c.; 50 lbs. for 50c.; 100 lbs. for \$1.00; 200 lbs. for \$1.75. At prices quoted purchasers must pay charges for carriage.



KENTIA BELMOREANA

## CORDYLIN OR DRACENA

*Cordylina Indivisa.* One of the most useful classes of plants for decorative purposes. The narrow leaves are green and bronze; a very graceful plant for centre of vases or hanging baskets. Each, 30c.; large plants by express, each, 30c.

## GREVILLEA ROBUSTA

(AUSTRALIAN SILK OAK)

This is a most beautiful plant, with delicate fern-like foliage, and forms a most attractive specimen for any decorative uses. It is of noble habit, and has large divided leaves; in a collection of house plants it is striking and graceful. It will resist drouth to a remarkable degree, and is therefore well adapted to dust and heat of living rooms. Each, 25c.



GREVILLEA, AUSTRALIAN SILK OAK



LATANIA BORBONICA



# Set of Three Grand Winter Blooming Roses

FOR 40 CENTS POSTPAID.



WINTER BLOOMING ROSE

**BRIDESMAID.**—The pink sport from Catherine Mermet, It is a stronger grower than the parent, has handsome foliage, is shorter joined, and the flowers are a much livelier pink. A grand variety. Each, 15c.

**THE BRIDE (A SWEET ROSE).**—A superb pure white Tea Rose, one of the best of its color; the buds and flowers are unusually large, finely formed, very double and full, and deliciously perfumed; it is a strong, healthy grower and a quick and constant bloomer; does well in open ground and is particularly valuable for growing in greenhouse for cut flowers, as it produces abundantly and its blooms are of the most desirable form and quality for floral work, bouquets, wreaths, etc. There are many white roses, but none more satisfactory than this lovely variety. Each, 15c.

**CATHERINE MERMET.**—One of the finest roses grown. The buds are very large and globular, the petals being recurved and showing to advantage the lovely bright pink of the centre, shading into light creamy pink, reminding one of La France in its silvery shading. A strong grower and fine bloomer. Each, 15c.

We will mail the above 3 Grand Roses (postpaid) to any address in Canada on receipt of 40c.

## THE NEW FERN NEPHROLEPIS "PIERSONII"

This variety possesses the same vigorous growth that is characteristic of the Boston Fern, from which it is said to be a sport. It is, however, much more beautiful. The fronds grow broad and heavy, measuring at least six inches across when fully developed, increasing in beauty as they develop. On account of the weight of the foliage, the plant assumes an exceedingly graceful appearance, and owing to the fullness of the fronds, even small plants are well furnished, making much more symmetrical and beautiful plants than the Boston Fern. The divided pinna, or the miniature fronds, keep growing constantly, showing two distinct shades of green, the ends being a light green, while the centre and main part of the fronds show a dark rich shade, the contrast producing a very beautiful effect, greatly enhancing the beauty of the plant. Each, 35c.; large plants by express, 75c. each.

### FERN, PTERIS CRETICA

**Pteris Cretica.** One of the finest plants for house decoration, growing very rapidly, and throwing up large, handsome fronds; making magnificent specimens; easily grown and very popular. Each, 15c.

### FERN, PTERIS SERRULATA

**Pteris Serrulata.** A useful basket variety of graceful habit. Each 15c.

### FERN, SELAGINELLA EMILIANA

**Selaginella Emilliana.** A most beautiful and distinct species, of bold but very graceful habit, growing about 10 inches high. Each, 15c.

### BOSTON SWORD FERN

(NEPHROLEPIS EXALTATA BOSTONIENSIS)

A variety which originated in Boston, where it has been in popular favor for a number of years under the name of Boston Fern. The fronds frequently attain a length of 4 feet, arching and drooping over very gracefully. Each, 25c.

### "MAIDEN HAIR"

"Maiden Hair," in the most popular varieties, our selection. Each, 20c.; 4 for 75c.



NEW PIERSONII FERN



DOWNING GOOSEBERRY.

## SMALL FRUITS, SHRUBS, Etc.

Blackberry, Ancient Briton	3 for 35c.; per doz., \$1 00	Raspberry, Golden Queen	2 for 25c.; per doz., \$1 25
" Erie	3 " 30c.; " 1 00	Strawberry-Raspberry	Each, 15c.; 4 for 50
" Taylor	3 " 25c.; " 75	Strawberry Nick Ohmer	per doz., 40c.; per 100 1 50
" Kansas Blackcap	2 " 25c.; " 1 25	" Clyde	" 30c.; " 1 25
Currants, Fay's Prolific	2 " 35c.; " 1 50	" Wm. Belt	" 40c.; " 1 50
" Black Champion	2 " 35c.; " 1 50	" Marshall	" 30c.; " 1 25
" White Grape	2 " 35c.; " 1 50	" Brandywine	" 40c.; " 1 50
Gooseberries, Industry	Ea. 30c.; " 3 00	Deutzia Grazills	Each, 20
" Downing	" 25c.; " 2 25	Spiraea Bumalda	" 20
Grapes, Eaton, Black	" 30c.; 4 for 1 00	Caragana Aborescens	" 20
" Niagara, White	" 30c.; 4 " 1 00	Calycanthus Floridus	" 20
" Lindley, Red	" 25c.; 5 " 1 00	Ampelopsis Veitchii, 2 year old	" 25
Raspberry, Cuthbert	4 for 30c.; per doz., 75	Roses, 3-year old, Assorted Varieties	" 30
" London	4 " 30c.; " 80	Clematis, in variety	from 50c. to \$1.00 each



# VEGETABLE SEEDS

	Per lb.	¼ lb.	Oz.	Pkt.
Cress, Extra Curled	\$0 40	\$0 15	\$0 10	\$0 05
" Broad Leaved	40	15	10	05
Cucumber, Rollinson's Telegraph	...	...	...	25
" Arlington White Spine	...	35	15	05
Lettuce, Toronto Gem	...	50	15	05
" Nonpariel	...	40	15	05
" Grand Rapids Forcing	...	50	15	05
Onion, Giant Yellow Rocca	1 25	35	15	05
" White Portugal	1 75	50	20	05
" Red Welsh	1 25	35	15	05
Radish, Rosy Gem, Forcing	75	25	10	05
" Early Scarlet Turnip, White Tip (Forcing)	70	25	10	05
" French Breakfast	70	20	10	05
Spinach, Victoria	30	20	10	05
" Flanders	30	20	10	05
" Long Standing	30	20	10	05
" Prickly or Fall	30	20	10	05

For Description of the above see Spring Catalogue.



# FLOWER SEEDS

	Per pkt.
Calceolaria, English superb strain; finest mixed	\$0 50
" Hybrid, Spotted and mottled varieties, mixed	35
Carnation, Double mixed	10
Cineraria Hybrid, Mixed	50
" Hybrid, extra choice, mixed	25
Cyclamen Persicam, Mixed	35
" Giganteum, Mixed	50
Daisy Snowball, White	10
Daisy Longfellow, Pink	10
Forget-me-not, the Jewel	10
Gloxinia Grandiflora Erecta	35
" Large flowering, mixed	25
Hollyhock Allegheny	15
" Double mixed	10
Musk Plant (Mimulus Moschatius)	10
Mignonette Machet	10
" Red Giant (Gabriel)	10
" Golden Gem	10
Primula, Primrose, Chinese "Standard," Mixed	50
" Mixed; large flowering, fringed	35
" Double, mixed	50
" Obconica, "Japanese Primrose"	15
" Forbesi, "Baby Primrose"	10
Smilax Asparagoides	10
Stocks, Double Dwarf German, mixed	10

	Per pkt.
Stocks, Snowflake, Improved	15
" Princess Alice (Cut and Come Again)	15
Sweet William, Mixed	05
" Auricula Flowered	10
Wallflower Harbinger	05
" Double Dwarf, dark brown	15
" Single; mixed	05

# PANSY

Our Pansy seed has been most carefully selected, and will give greatest satisfaction. To insure best results strong rich soil must be selected, somewhat shaded, and the plants not allowed to become too dry.

**Pansy, Our Giant Show Mixture** contains seed from the most celebrated growers of France, Germany, England and America, and comprises all the finest and most "odd" colors found in the German strains, as well as the giant flowered Trimardeau, Bugnot and Cassier. ½ oz., \$1; per pkt., 35c.

Select Mixture, oz., \$2; package, 10c.  
Choice Mixed, oz., \$1; package, 5c.

# MUSHROOM SPAWN

Although the Mushroom is one of the most delicious and at the same time most nutritious of all known esculents, its cultivation is not generally understood. We have had so many enquiries regarding cultivation of Mushrooms that we have prepared and published an 8-page pamphlet written by a practical grower, which gives in a concise form all necessary information for the successful raising of the best Mushrooms. This pamphlet will be sent



MUSHROOM SPAWN

the genuine English "Milltrack" Mushroom Spawn.

**Mushroom Spawn, English.** Per brick, 25c.; 5 for \$1 (postpaid). Special quotations on quantities.

**Mushroom Spawn, French.** Per 2 lb. box, \$1, postpaid.

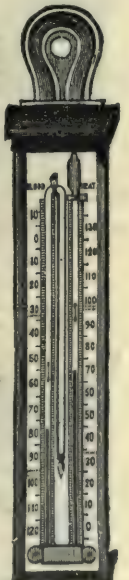
**WILD RICE** Wild Rice, Zizania. (For fall sowing). The Zizania is valuable as a forage plant on inundated lands and along the shores of marshes. Cattle are fond of it when green, and it makes a good hay. The seed should be sown in 6 inches to 6 feet of water, having a soft mud bottom. Lb., 25c.; by mail, 30c.; 10 lbs. or over, 20c. per lb.; by mail, 25c. per lb.

## VALUABLE BOOKS

- American Standard of Perfection on Poultry; \$1.30.
- An Egg Farm—Stoddart on the Management of Poultry, \$1.10.
- Bulbs and Bulbous Plants, 30c.
- Bulbs and Tuberos Rooted Plants (C. L. Allen), \$2.10.
- Mushroom Culture; Robinson's; cloth, illustrated, 60c.
- Window Flower Garden, 75c.
- Your Plants, House and Garden, 45c.

## THERMOMETERS

- Incubating, Standard Grade, 6-inch Flanged Metal Scale, 55c.
- Standard "Air Scale," 8-inch, 80c.; 10 inch, \$1.00. All made with seasoned tubes. Warranted correct.
- Registering. (No. 1). Specially made for Greenhouse use. Each, \$3.
- Minimum, on boxwood cabinet, each, 75c.
- Hotbed, 10-in. round turned case, with brass bottom, Each, \$1 and \$1.50.
- Dairy, Imported German, all glass, for dairy work, propagating beds, hot-beds, etc. Price, each, 25c.



# EARTHENWARE FLOWER POTS AND HANGING BASKETS

The measurement is from inside to outside. Packing charged extra. Pots carefully packed, and are shipped at purchaser's risk.

FLOWER POTS			SAUCERS	FLOWER POTS			SAUCERS	HANGING BASKETS
Size	Price per doz	Price per 100	Price per doz.	Size	Price per doz.	Price per 100	Price per doz	
Thumbs ... 2inch	\$0 15	\$1 00	...	Pints.....5 inch	\$0 40	\$2 50	\$0 25	From 15c. to 40c. each, according to style.
Sm'l Verbena 3 "	20	1 20	...	Quarts.....6 "	50	3 75	30	
Large.....3½"	20	1 50	...	2 ".....7 "	1 00	7 00	50	
Half Pints...4 "	25	2 00	...	4 ".....9 "	1 75		75	





# POULTRY SUPPLIES

## RUST'S EGG PRODUCER

MAKES HENS LAY WHEN EGGS ARE HIGH-PRICED

TRADE (THE HEN PERSUADER) MARK

A scientific combination of substances, which when assimilated by fowls, produce eggs, plumage, growth and development, exactly as certain foods produce milk in cows, or fertilizers increase crops. It contains in addition valuable tonics and remedial agents which insure perfect assimilation and robust health, without which the best results cannot be attained. It makes hens lay in summer and winter. Lb. pkts. 25c. (by mail, postpaid, 40c.); 2½ lb. box. 50c.; 6 lb. box, \$1; 10 lb. box, \$1.50, by express or freight only at purchaser's expense.

## RUST'S HAVEN'S CONDITION POWDERS

The only positive preventative and cure for Gapes and Poultry Cholera and the best Medicine for Horses, Cattle, Sheep and Hogs.

We warrant Haven's Climax Condition Powders to be free from Antimony, Arsenic Alum, Resin, Saltpetre and all harmful ingredients, and to be entirely unlike any other preparation. It is not a feed, but an honest medicine at an honest price. Liberal packages weighing 14 oz., 25c. (by mail, postpaid, 40c.); 2 lb. box, 50c.; 5 lb. box (equal to six 25c. packages) \$1 by express or freight at purchaser's expense.

## RUST'S HAVEN'S ROUP PILLS

These pills act directly on the glands and mucous membrane, allay all tendency to fever, and carry off all morbid matter from the system. They are entirely free from everything harmful, and are believed to be the best remedy ever discovered for Roup, Catarrh, Colds and Distemper. Price, per box of 48 pills, postpaid, 25c.; 6 box of 250 for \$1.

## RUST'S LICE KILLING POWDER

A Disinfectant Insect Powder

For lice on Setting Hens. Laying on Exhibition Stock. It works immediately without injury to the eggs or chickens. Does not soil plumage, yet purifies and cleanses down to the skin. Also invaluable for lice on Horses, Cattle or Plants, Ticks on Sheep, Fleas on Dogs, Moths in Carpets or Furs. In fact lice on anything can be exterminated by a liberal use of this powder. Price, 5 oz. box, 15c.; 15 oz. box, 25c.; postpaid, 40c.

## CYPHERS ROUP CURE

Cures Roup. Cure Guaranteed or Money Refunded

Cypher's Roup Cure cures Roup, prevents and cures Roup, common colds, and for canker is without equal. Pigeon growers as well as poultrymen will find this remedy of especial value in the cure of all forms of canker in poultry or pigeons. Cyphers Roup Cure is used by simply dissolving the remedy in the drinking water. The birds take their own medicine. Full directions for the use of this remedy will be found on the label of every package. Large-sized package, \$1; postpaid, \$1.10; Small-sized package, 50c.; postpaid, 55c.

## CYPHERS CHICK FOOD

A Complete Scientifically-Compounded Food for Young Chicks.

Cyphers Chick Food is a mixture of 11 different grains and seeds, proportioned so as to meet all the needs of growing chicks and to fully nourish them. By the term "fully nourish" we mean a great deal. Chick foods, as a rule, contain too much fat-forming and not enough bone-forming elements, and in consequence the chick develops indigestion and diarrhoea (which ultimately means no digestion at all), and quickly starves to death. Or, if partially nourished, leg weakness develops, and the chick drags out a miserable existence.

Cyphers Chick Food fills all requirements, as the food is a complete and properly-balanced ration, ready for use.

In compounding Cyphers Chick Food, the protein—or flesh and muscle forming element—is maintained high, the carbo-hydrates—or fat and heat forming elements are reduced to their proper proportion, and the ash—or mineral elements—are in sufficient amount to supply the needs of the rapidly growing bird. If chickens are to be developed into breeders, no other food is required for the first eight weeks.

PRICES :

25 lbs.....	\$0.90
50 lbs.....	1.75
100 lbs.....	3.00

Put up in sealed 100 lb. bags bearing manufacturer's trade mark. Prices are Ex Warehouse Toronto and Hamilton.



No. 7.



## MANN'S GREEN BONE CUTTER No. 5 B M, NEW MODEL

Intended for flocks of 15 to 29 hens. Can be used for flocks of 100 hens, but larger size is more economical in the end for such a large flock. Mounted on iron stand, no expense to set it up. Place for pan to catch the bone. Patented automatic governing spring feed, 1902 style.

Cylinder is larger than the old style No. 1. Cutter plate has 4 knives instead of 3. Will cut faster and easier than other types costing twice as much. Capacity 15 to 20 lbs. per hour. Weight 80 lbs. Price, Toronto and Hamilton, \$12; Winnipeg, \$13.00.

## MANN'S BONE CUTTER No. 5 B

This machine is exactly the same as No. 5 B M, except that it has not the iron stand. The capacity is the same. Weight 55 lbs. Price, \$9.00; Winnipeg, \$10.00.

## MANN'S BONE CUTTER, No. 5 C

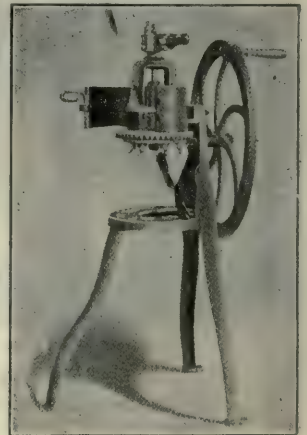
This machine is exactly the same as No. 5, with a crank handle instead of a balance wheel. Capacity same as No. 5 B. Weight 30 lbs. Price, Toronto and Hamilton, \$7.00; Winnipeg, \$7.75.

## MANN'S BONE CUTTER, No. 7

Intended for flocks of 40 to 100 hens. Can profitably be used for 200 hens or more, but we recommend No. 9 for flocks of more than 100. Mounted on strong iron stand with large table for box or pan to receive cut bone. Patented 1902 model automatic governing spring feed. Large open-hinged cylinder, giving instant access to all working parts. Six special knives. Gear Guard, anti-cog device. Heavy balance wheel, with adjustable handle, besides all the best features of our old-style machines. Weight 107 lbs. Capacity, ¾ to 1 lb. per minute. Made in one size only. Price, Toronto and Hamilton, \$14.00; Winnipeg, \$15.50.

## MANN'S BONE CUTTER No. 9

Intended for flocks of 100 to 300 hens. The description of No. 7 will apply to this size also. The difference consists of larger cylinder, greater holding capacity, different design and larger table. Its economy is evident. Weight, 163 lbs. Capacity ¾ to 1½ lbs. per minute. Price, Toronto and Hamilton, \$20.00; Winnipeg, \$23.00.

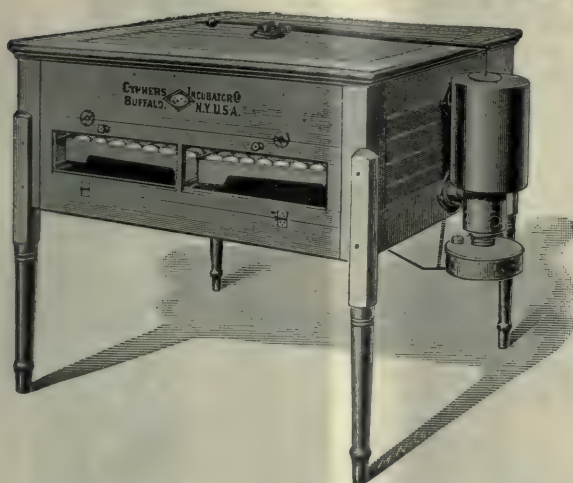


No. 5 B M

We also handle larger machines to run by hand or power; write us for prices and particulars.



# THE GENUINE Cyphers Incubators and Brooders



## CYPHERS INCUBATORS

We sell the Genuine Cyphers Incubators at Money Saving Prices.

The Celebrated Patent-Diaphragm, Non-Moisture Standard Cyphers Incubators, for which we are authorized Agents, are guaranteed by the manufacturers, as follows:—

- FIRST—To require no supplied moisture, thus disposing of the moisture question.
- SECOND—To be self-ventilating, the air in the egg chamber remaining sweet and pure.
- THIRD—To be self-regulating, being equipped with the most accurate and durable regulator thus far invented.
- FOURTH—To be in all respects the simplest and easiest to operate and control, requiring less labor and less attention than any other style or make of Incubator.
- FIFTH—That where it is run in competition with any Incubator of a different make, it shall, in three or more hatches, bring out a larger average percentage of the fertile eggs in good, healthy chicks or ducklings than does its competitor.
- SIXTH—That each and every Standard Cyphers Incubator, sold under Registered Trade Mark will do satisfactory work in the hands of the purchaser who will give it a trial, or it can be returned to us within 90 days, less reasonable wear, and the purchase price will be refunded.

We, as agents for the Standard Patented Cyphers Incubators and Brooders, are authorized by the manufacturers to stand back of the fore-going guarantee in every particular, and hereby agree to do so. Under this arrangement, all who purchase from us are insured ample protection. By special arrangement with the manufacturers, we are now in a position to sell Cyphers Incubators, Ex-Warehouse, Toronto or Hamilton, at following prices:

No. 0 60 hen eggs.....	\$15 00	No. 2 220 hen eggs.....	\$26 00
" 1 120 ".....	21 00	" 3 360 ".....	32 00
EX WAREHOUSE, WINNIPEG:			
No. 0 60 hen eggs.....	\$16 00	No. 2 220 hen eggs.....	\$28 00
" 1 120 ".....	22 50	" 3 360 ".....	35 00

## BROODER STOVES

These stoves positively have no equal. The safety water pan holds nearly a quart of water and extends over the entire surface of the oil bowl, removing all danger of overheating the oil. The **CYPHERS BROODER STOVE** furnishes twice the heat of an ordinary brooder lamp. Just the thing for use in home-made brooders. Height, 7½ inches, greatest width, 10½ inches. Price of stove complete, each, \$1.75.

## Cyphers Unequaled Apartment Brooders

Cyphers Brooders, like Cyphers Incubators, are correct in principle; are durably made out of suitable material; are fire-proof, wind-proof and storm-proof, and guaranteed to be the best brooder on the market, regardless of price. They are fit companions for the Standard Cyphers Patent Diaphragm, Non-Moisture, Self-Ventilating and Self-Regulating Incubators, and with reasonable attention will take proper care of the chicks until they are ready to shift for themselves.

### STYLE A OUTDOOR BROODER

Next to its Incubators, the Cyphers Incubator Company especially prides itself on its Style A Three-Apartment Outdoor Brooder, which is pronounced by thousands of users to be the best brooding device invented thus far for indoor and outdoor use. The Style A Brooder is 36 x 60 inches in size; has three apartments; one under the hover, averaging 90 degrees in temperature; one outside the hover, averaging 80 to 85 degrees, and a separate apartment for a run-way which averages 70 degrees. This brooder is roofed with tin; is heated with a Cyphers Safety Brooder Stove, and with reasonable care will last many years.

Prices: Ex Warehouse Toronto and Hamilton, **A Brooder**, 100 chick, \$14.00; **B Brooder**, \$12.00. Ex Warehouse Winnipeg, **A Brooder**, 100 chick, \$15.50; **B Brooder**, \$13.50.



CYPHERS STYLE A—THREE APARTMENT BROODER

## STORM KING BROODERS

Recognizing the wide-spread demand for a thoroughly well made practical brooder that can be sold at a lower price than the Cyphers Standard Style "A" Breeder, we have made arrangements with the Cyphers Incubator Company for the sale of their Storm King Brooder. This is a combined brooder and colony coop, manufactured in two sizes. The No. 1, floor space 24 x 39 inches; No. 2, floor space 28 x 45 inches. Aside from size, these brooders are exactly the same in construction. They are built of first-class lumber, well matched and machined, dressed on both sides, and are free from all loose knots. We know the Storm King Brooder to be a good artificial mother, and one that will safely care for the chicks from the time they are hatched until they are half grown if need be.

While the Storm King Brooder is not for all purposes as serviceable or as satisfactory a brooder as the Cyphers Standard Style "A," we believe it is more satisfactory than any other low-priced brooder on the market.

PRICES: Toronto and Hamilton, No. 1, 24 x 39 inches, \$8.25; No. 2, 28 x 45 inches, \$11.00. Ex Warehouse, Winnipeg, No. 1, 24 x 39 in., \$9.00; No. 2, 28 x 45 in., \$12.00.

## SANITARY GRIT AND SHELL BOX

Necessary on every Well-Organized Poultry Plant.

Sanitary Grit and Shell Boxes work a material saving in grit, oyster shell, ground bone, charcoal or poultry foods. They are thoroughly practical self-feeding boxes, well made out of heavy galvanized iron and are practically indestructible. The style of box is made with three compartments—for grit, oyster shell and charcoal—but when a small flock is kept may be made to serve the purpose of a dry food hopper.

Price at Toronto and Hamilton of Sanitary Grit and Shell Box, each 60c.; Winnipeg, 75c.





# FALL SEED WHEAT

## Sow "Prosperity" Wheat IT'S THE MONEY WHEAT

The Heaviest Yields, the Best Straw, Stands the Winter Well, and is Practically Insect Proof. The Best Red Fall Wheat Offered.

**Prosperity** is a strong, vigorous grower, it stools out well, and, although the straw is of good length, it is very strong, and stands up when other varieties go down. It is also exceptionally free from rust and one of the hardiest and most vigorous varieties in existence. The Heads are bald, long and thick-set, containing plump, even, thin-skinned red grain. Its greatest characteristic, however, is its wonderful productiveness, it having out-yielded any other sort we have grown the past three years. It is also earlier than most kinds, while its milling qualities are unsurpassed. Price per lb., 15c.; 4 lb., 50c., postpaid. Larger quantities by express or freight, at purchaser's expense. Peck, 50c.; bushel, \$1.60; 5 bushel lots and over, \$1.50 per bushel. Bags, 20c. each, extra.

## "Early Red Ontario"

The heads are of good size, very compact, beardless, and with a white chaff. The grain is red, very hard, with a thin bran, and of excellent milling qualities. Straw of medium length, very strong, and will stand up on any soil. Its extreme hardness will recommend it to many growers, as winter killing is the source of so many failures with Fall Wheat in this Country. A very heavy yielder, stools out well, and is very free from rust. Price, small lots by mail, post-paid, lb., 15c.; 4 lb., 50c.; larger quantities by express or freight, at purchaser's expense. Per peck, 50c.; per bushel, \$1.50; 5 bushel lots and over, \$1.45 per bushel. Bags, 20c. each.

## ABUNDANCE

White Winter Wheat. This is one of the finest varieties ever introduced. For an all round good wheat it will appeal to any grower. The berry presents a beautiful appearance, indicating its wonderful vitality.

Abundance is a wheat of first quality, very hardy and an enormous yielder. Price, per lb., 15c.; 4 lb., 50c., postpaid. Larger quantities by freight, at purchaser's expense. Peck, 50c.; bushel, \$1.60; 5 bushels and over, \$1.50 per bushel. Bags, 20c. each, extra.

## FALL RYE

Common—We have a splendid sample to offer this season, selected for seed. Per bushel, \$1.00; bag, 20c.

## Grass and Clover Seeds

We Quote Present Prices, Subject to Market Fluctuations.

Timothy—Choice. Per bushel, \$3.25; bag, 20c.	Red Top Grass—Fancy, lb., 14c.; postpaid, 19c.
Extra Choice Re-cleaned. Per bushel, \$2.75; bag, 20c.	Kentucky Blue Grass—Fancy, lb., 20c.; postpaid, 25c.
Red Clover—Choice. Fancy, extra screened. } Samples and prices on application.	Canadian Blue Grass—Fancy, lb., 13c.; postpaid, 18c.
Alsike Clover—Choice. Fancy, Extra Screened. }	Bromus Inermis Grass—Fancy, lb., 20c.; postpaid, 25c.

## BIBBY'S "CREAM EQUIVALENT" FOR CALVES AND YOUNG PIGS.

It is used to substitute cow's milk where milk is scarce; and to enrich skim or separated milk when these products are available, or, if necessary, for raising calves without any milk whatever after a few weeks old. A farmer can by its means rear good calves and pigs, and sell his milk or the butter and cheese fats. "Cream Equivalent" supplies what is lacking, and yields more economic results than is otherwise obtainable. It contains no chemicals, and can be fed with perfect safety to high-class stock. Calves take to it readily, and thrive well on it. No other production does the work with the same effectiveness. If you are short of milk or have only separated milk for your calves, make a trial of "Cream Equivalent." You will find that it will do all we claim for it. Its composition is based on the results of hundreds of practical tests carried on at the Bibby Experimental Farm, Cheshire, England. It has the largest sale in the world; this fact alone points out its superiority over everything else of the kind. Send for a trial bag and make your own test. We are confident that when this food is given a fair trial its merits will be so convincing that further argument will be unnecessary. Full directions for use are sent in every bag. (Write for circular.) Price—Per 50 lb. bag, \$2.25; 100 lb. bag, \$4.00. Purchaser pays freight charges.

## BLACK HAWK FEED MILL.



FOR GRINDING WHEAT, CORN AND GRAIN

strongest metals. Weight, complete, 12 lbs. Price, at Toronto and Hamilton, each, \$3; at Winnipeg, \$3.25; by express at purchaser's expense.

## FEEDING STUFFS

- Oil Cake, pure fine ground, 100 lbs., \$1.75; per ton, \$34, bags included.
- Choice Linseed Meal. Per 100 lbs., \$3.60, bags included.
- Prime Linseed Meal. Per 100 lbs., \$3.30, bags included.
- Prime Flax Seed. Per bushel (56 lbs.), \$1.30; bags, 20c. each.
- Choice Flax Seed. Per bushel (56 lbs.), \$2; bags, 20c. each.

All Quotations on Field Seeds, Oil cakes, etc., are Ex. Warehouse, Toronto or Hamilton.



## Black Hawk Corn Sheller

A Sheller that Shells. It can be set to shell any corn that grows. Set it for pop corn and it will shell pop corn; set it for field corn and it will shell field corn; set it for the largest corn that grows and it will shell the largest corn.

This practical sheller meets every requirement, appeals to our common sense, and is our best agent. The working parts are all machine-made, not castings hastily thrown together. Every part is perfectly fitted and can be duplicated at any time. Weight, 11 lbs. Price, at Toronto and Hamilton, \$2.50; at Winnipeg, \$2.75; by express at purchaser's expense.

## Black Hawk Grinding Mill

For grain only. A cheap and handy Grinding Mill. If you live in a wheat country you can always have fresh Graham Meal as well as Corn Meal for the table. Just the machine for the poultry man, farm or family use. It is readily taken apart for cleaning or oiling, without the use of tools. Easily adjusted for fine or coarse grinding of wheat, corn or other dry grain or spices. All bearings are chilled, crank of malleable iron. Grinding plates made of the hardest and



ORIGINAL IN EVERY FEATURE.

NEVER BREAKS OR FAILS TO DO GOOD WORK.

HELLS FAST, SHELLS CLEAN, SHELLS EASILY.

"BLACK HAWK" CORN SHELLER

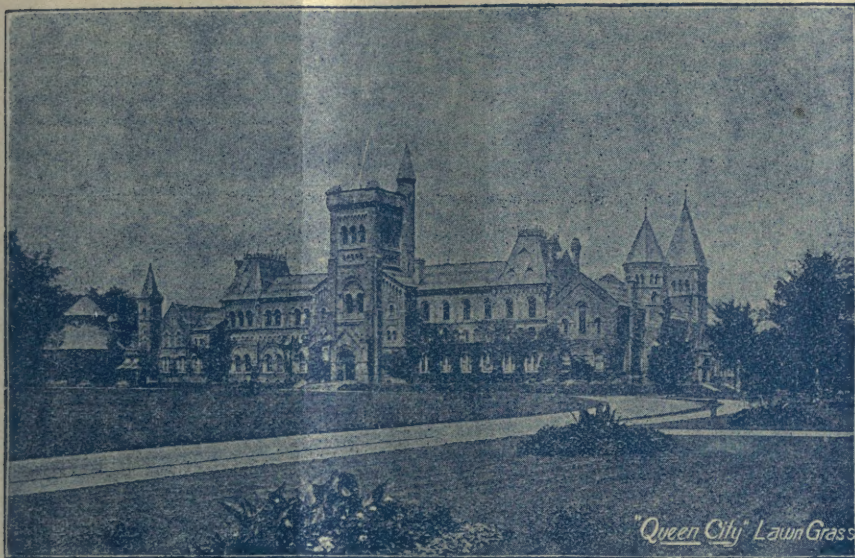


# Sow Our "QUEEN CITY" LAWN GRASS SEED

IT SOON FORMS A PERMANENT, RICH, GREEN, GRASSY SWARD

That our "QUEEN CITY" is the finest mixture of Lawn Grass Seed ever offered, the immense quantity we annually sell is the best proof we can offer. It is the best Lawn Seed for our Canadian climate, and is composed of various grasses that grow and flourish during different months of the year, so that a rich, deep green, velvety lawn is constantly maintained. Our mixture is the result of several years' careful experimenting, and as we now offer it, it stands unequalled.

The quantity required for making a handsome lawn is 80 to 100 lbs. per acre, or for renovating old lawns, 15 to 25 lbs. For a plot 20 x 20, or 400 square feet, 1 lb. is required for a new lawn, or about half a pound for renovation. Per lb., 25c.; postpaid, 30c.



## "SHADY NOOK" LAWN GRASS

Many lawns have bare and unsightly spots under trees and shaded places, which have been seeded, sodded, and every possible attention given to secure grass, but without success. There are but few grasses which will grow and thrive in such situations. Our "Shady Nook" mixture is a combination of dwarf-growing ever-green varieties, which in their natural state are to be found growing in woods and shady places, and will form a fine green sward. Ground that has been densely shaded by trees often becomes "sour," and if not properly drained is apt to be covered with a coating of moss; in such cases a light application of land plaster or wood ashes is most excellent, but the moss should be first removed by the use of a sharp rake. This should be done in the autumn and seeded with "Shady Nook" Mixture. Per lb., 35c.; postpaid, 40c.

## JAPANESE FERN BALL

A BEAUTIFUL NOVELTY FROM JAPAN

For the Window, Drawing Room, or suspended from Chandelier over Dining Table, or used in Fern Dishes. Unique, beautiful, perpetual, cheap. What is prettier in winter than a Ball of delicate Emerald Green Ferns?

This little beauty is an importation from Japan, and is certainly the finest addition to the Fernery yet introduced. The Ball is composed of the Japanese Island Fern Roots, known as Davallia Bullata, var Nagaha, and Spagnum Moss, and so constructed as to send out leaves of beautiful emerald green from every point. All who see it are delighted, and want it, and up to the present time the supply has not been equal to the demand.

**DIRECTIONS FOR STARTING.**—Place ball in water for fifteen minutes, and then suspend in any desired position; repeat every two days until growth is started, after which sprinkle occasionally as required. To use in fern dish, cut ball in halves, placing flat side down, thus getting two dishes of beautiful ferns. The fern ball may be allowed to dry up at any time and set away, and started again by watering same as before. It will make a most luxuriant growth the second year. Price, in dormant state, 5 in. diameter, 25c., postpaid. 8 in. diameter, 40c., postpaid. Ready in November.



JAPANESE FERN BALL, FULLY GROWN

## STANDARD PLANT FOOD

Brings Flowers to their Fullest Development in the Shortest Time

Do not put the Manure, dry or dissolved, on the leaves, and do not overdose, as plant roots take it up very greedily, and if overfed, suffer from the results of overfeeding.

**FOR POT PLANTS.** For all pot plants this concentrated manure is unsurpassed. It is best dissolved in water in the proportion of 1/4 to 1 oz. to a gallon, and this solution used for watering, taking care not to let any of the solution come in contact with the leaves. Quick growing plants, such as Begonias, should be watered once a week, and Palms, Rubbers, etc., once every two weeks. By such application the plants develop more rapidly, and produce an increase of bloom to an extent hitherto unknown. It can also be mixed with the soil before potting, at the rate of one desert-spoonful manure to one gallon of earth. Full directions on each package. Price, 1 lb. package, 25c.; mail, postpaid, 40c.

## CHRISTMAS DECORATIONS

**Holly Branches**

with nice green foliage and plenty of red berries, carefully packed in case containing 15 cubic feet, ready to ship 5th December. Per case, \$6.00; half case, \$3.25; barrel, \$2.00; by freight or express at purchaser's expense from Toronto. Smaller quantities, per lb., 35c.; 5 lbs., \$1.50, postpaid.

**English Mistletoe**

Nice, imported stock, packed in boxes containing 1 lb., 60c., postpaid.

**Bouquet Green or Club**

This is much superior to the Cedar, keeps in a nice green condition for weeks. Very superior for church and other decorative work. Price, medium flat, per 100 yds., \$3.50; heavy flat, \$5.00. Fancy, with Immortelles, flowers every foot, \$6.00 per 100 yds. By express at purchaser's expense from Toronto.

**Moss Wreathing**

**Pampas Plumes**

Fine bushy stock in good colors. Price: each, 10c.; 3 for 25c.; per doz., \$1, cannot be sent by mail.

**The Steele, Briggs Seed Co., Limited**  
Toronto, Hamilton, and Winnipeg, Man.



HEAD OFFICE  
TORONTO, ONT.  
BRANCHES AT  
HAMILTON, ONT.  
AND  
WINNIPEG, MAN.

**BULBS,  
PLANTS,  
SEEDS  
AND  
POULTRY  
SUPPLIES.**

NEW NARCISSUS  
"BICOLOR-VICTORIA"  
see page 6.



AUTUMN

1905

THE **STEELE, BRIGGS** **SEED CO.** LIMITED  
TORONTO, ONT.







